

# User Guide

Wi-Fi<sup>®</sup> Card by palmOne

palmOne™

## Copyright and Trademark

© 2004-2005 palmOne, Inc. All rights reserved.

palmOne, the palmOne logo, Tungsten, HotSync, Graffiti, VersaMail, and Zire are trademarks or registered trademarks owned by or licensed to palmOne, Inc. palmOne, Inc. uses the Bluetooth wireless technology trademark under express license from Bluetooth SIG, Inc., and the Wi-Fi wireless technology trademark under express license from Wi-Fi Alliance. All other brand and product names are or may be trademarks of, and are used to identify products or services of, their respective owners.

## Disclaimer and Limitation of Liability

palmOne, Inc. assumes no responsibility for any damage or loss resulting from the use of this guide.

palmOne, Inc. assumes no responsibility for any loss or claims by third parties which may arise through the use of this software. palmOne, Inc. assumes no responsibility for any damage or loss caused by deletion of data as a result of malfunction, dead battery, or repairs. Be sure to make backup copies of all important data on other media to protect against data loss.

**[ ! ] IMPORTANT** Please read the End User Software License Agreement with this product before using the accompanying software program(s). Using any part of the software indicates that you accept the terms of the End User Software License Agreement.

## Agency Compliance Information

Product regulatory and compliance information can be found in [Product Regulatory Information](#) later in this guide.

PN: 406-10344-00

# Table of Contents

<b>About This Book</b> .....	<b>v</b>
Viewing this guide .....	v
What's in this guide? .....	vii
<b>Chapter 1: Setting Up Wi-Fi® Network Connections</b> .....	<b>1</b>
Inserting the Wi-Fi card .....	2
Removing the Wi-Fi card .....	4
Setting up a nonencrypted network connection .....	5
Setting up a WEP-encrypted network connection .....	6
Connecting to a network .....	10
<b>Chapter 2: Synchronizing Using a Wi-Fi® Connection</b> .....	<b>11</b>
Preparing your computer .....	12
Preparing your handheld .....	14
Synchronizing your handheld using a Wi-Fi connection.....	17
<b>Chapter 3: Using a VPN Account</b> .....	<b>19</b>
Working with VPN accounts on your	
Tungsten™ T5 or Tungsten™ E2 handheld .....	20
Setting up a VPN account on your Tungsten T5 or Tungsten E2 handheld .....	20
Connecting to your VPN using your Tungsten T5 or Tungsten E2 handheld .....	24
Using Auto-Connect on the Tungsten E2 handheld .....	27
Switching between VPN accounts on your Tungsten T5 or Tungsten E2 handheld .....	28
Editing a VPN account on your Tungsten T5 or Tungsten E2 handheld .....	29
Working with VPN accounts on your Tungsten™ T3 or Zire™ 72 handheld .....	31

Setting up a VPN account on your Tungsten T3 or Zire 72 handheld .....	31
Switching between VPN accounts on your Tungsten T3 or Zire 72 handheld .....	35
Editing a VPN account on your Tungsten T3 or Zire 72 handheld ..	36
Disabling and enabling VPN on your Tungsten T3 or Zire 72 handheld .....	38
<b>Chapter 4: Managing Wi-Fi® Network Connections .....</b>	<b>39</b>
Turning Wi-Fi on or off .....	39
Viewing signal strength .....	40
Viewing Wi-Fi connection information .....	42
Conserving battery power .....	43
Changing the timeout period .....	45
Setting up a peer-to-peer (ad hoc) network connection .....	46
Editing Wi-Fi network settings .....	50
<b>Chapter 5: Common Questions .....</b>	<b>56</b>
Why can't I make a wireless connection? .....	56
Why can't I make a wireless connection when traveling internationally? .....	56
Why doesn't the VPN included with my handheld work with my corporate network? .....	57
Why can't I synchronize my handheld wirelessly? .....	57
Why doesn't the Wi-Fi card software work after I restored my handheld from a backup or performed a hard reset? .....	57
Why is my VPN connection failing? .....	57
Contacting Technical Support .....	58
<b>Chapter 6: Wi-Fi® Frequencies .....</b>	<b>59</b>
<b>Product Regulatory Information .....</b>	<b>61</b>
<b>Index .....</b>	<b>69</b>

# About This Book

## [ ! ] Before You Begin





Complete the steps in the *Getting Started* guide in your Wi-Fi card package to install the Wi-Fi software and insert the card into your handheld.

This guide tells you how to set up and use your Wi-Fi® card by palmOne to connect to a range of wireless local area networks (WLAN) that use 802.11b radio communication, including encrypted and secured networks.

**[ ! ] IMPORTANT** To use the Wi-Fi card, you must have access to a home or corporate network or a service plan with a network service provider (sold separately). You must also be within range of a wireless access point.

## Viewing this guide

Here are some tips for using Acrobat Reader, to make it easier to read and find information in this guide:

- Click Zoom In  repeatedly to magnify the page size. Click Zoom Out  to return to the original view.
- Click an entry in the Table of Contents or Index to go directly to that section of the guide.
- If you link to a page in the guide, click Previous View  or  (depending on your version of Acrobat Reader) to return to the page you were on before you clicked the link.
- Click the Print icon to print pages. When selecting the page you want to print, be sure to use the file-page number shown at the bottom of your computer screen, not the page number that appears in the lower-right corner of the page. For example, to print the page you are reading right now, select page 5 (the file page), not page v.



## Sidebars

### [ ! ] **Before You Begin**

Tasks you must complete before you can do the steps described in the chapter.

### \* **Tip**

A suggestion on how to use a feature more fully; a shortcut; a pointer to a related feature.

### + **Did You Know?**

An interesting fact about the topic being described; may include a pointer to more information.

### » **Key Term**

A technical term related to the topic being described. The term may appear in this guide or only on your handheld.

## What's in this guide?

Each chapter contains step-by-step instructions with cues for action, links to detailed information, and sidebars.

### Step-by-step instructions

How-to information. Look for these cues in instructions:

 **Continued**

A cue at the bottom of a page that means the procedure continues on the next page.

 **Done**

A cue that signals the end of the procedure. You're done.

**[ ! ] IMPORTANT**

A step that you must follow; otherwise, you could experience an error or even lose information.

**[ & ] OPTIONAL**

A step you might find useful.

 **NOTE**

Information that applies only in certain cases or that tells more about a procedure step.

# Setting Up Wi-Fi® Network Connections

- » **Key Term**  
**Wi-Fi network**  
A wireless local area network (WLAN) based on the 802.11 standard.
- » **Key Term**  
**Wireless access point**  
A network device with an antenna that provides wireless connections to a larger network.
- » **Key Term**  
**SSID** The name that identifies a Wi-Fi network. If a network does not broadcast its SSID, you must get the SSID from the network administrator in order to connect to the network.

Your Wi-Fi® card by palmOne contains a built-in 802.11b radio that lets you connect your handheld to a Wi-Fi network (a wireless local area network). Many corporate organizations and public environments, such as your local coffee shop or library, offer access to a Wi-Fi network. Once you set up Wi-Fi network access on your handheld, you can quickly connect to it anytime you are within range of a Wi-Fi access point.

A Wi-Fi network may be encrypted (secured) or nonencrypted, and it may or may not broadcast its name, or SSID. When you begin Wi-Fi setup, your handheld automatically displays networks within range that are broadcasting their SSID. Follow the instructions in this chapter for the type of network you want to set up.

**[ ! ] IMPORTANT** If your handheld has Bluetooth® wireless technology installed, you must turn it off to use the Wi-Fi card. Be sure the Wi-Fi card is seated in the expansion card slot before you set up or connect to a Wi-Fi network. palmOne cannot guarantee interoperability between Wi-Fi and Bluetooth wireless technology, so we recommend that you turn off Bluetooth technology when using the Wi-Fi card.

**[ ! ] Before You Begin**

Complete the steps in the *Getting Started* guide in your Wi-Fi card package to install the Wi-Fi software on your handheld. Your handheld must have at least 7MB of free memory to install the Wi-Fi software.

**\* Tip**

You can conserve battery power by removing the Wi-Fi card or turning off Wi-Fi when you are not planning on using it for an extended period.

**\* Tip**

No confirmation tone when you insert the card? In Preferences, go to Sounds & Alerts and turn on the System Sound.

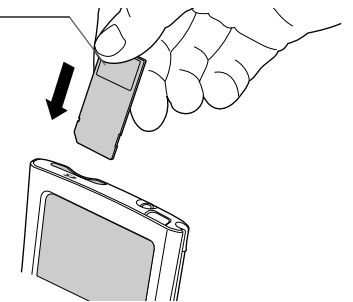
## Inserting the Wi-Fi card

**[ ! ] IMPORTANT** Make sure that Bluetooth wireless feature is off before inserting the Wi-Fi card. See the *Getting Started* guide for instructions.

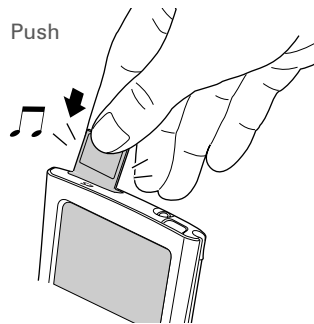
**1**

Insert the card into the expansion slot with the palmOne logo label facing the front of the handheld.

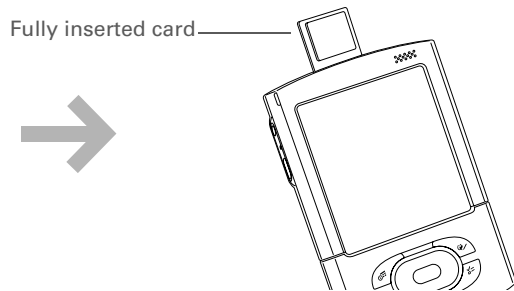
palmOne  
logo label

**2**

Push the card in until you hear the confirmation tone. The top of the card extends from the slot when the card is fully inserted.





Fully inserted card



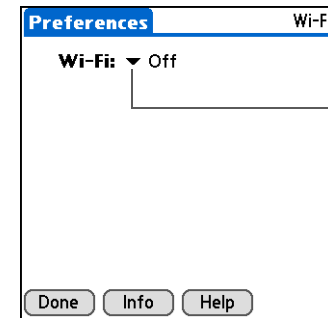
↘ Continued

3

In the Applications/Home screen , select Prefs , and then select Wi-Fi.

4

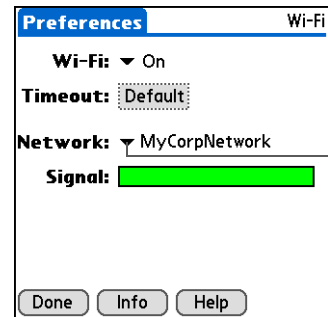
From the Wi-Fi pick list, select On. The Wi-Fi card searches for available networks that publish their network names and tries to connect to one of them. This may take a few moments.



Pick list

5

To connect to a different network, select it from the network pick list. If the network you want does not appear in the list, you need to set it up on your handheld. See [Setting up a nonencrypted network connection](#) or [Setting up a WEP-encrypted network connection](#) depending on the type of network you want to set up.



Network pick list

↓ Done

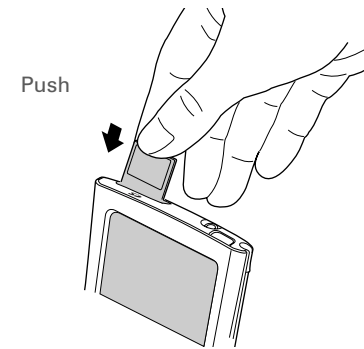
\* **Tip**  
Looking for a handy way to carry your expansion cards? You can purchase a variety of carrying cases. Visit [www.palmOne.com](http://www.palmOne.com) and look for the Accessories link for your handheld.

## Removing the Wi-Fi card

Wi-Fi turns off automatically when you remove the Wi-Fi card from the expansion slot.

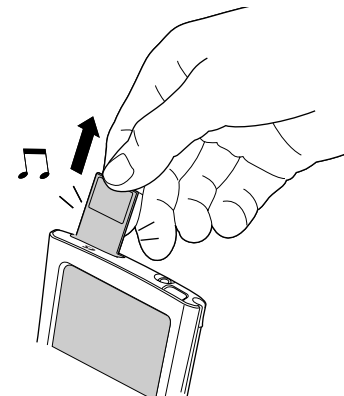
**1**

Push lightly against the card with your thumb.

**2**



Slide the card out of the expansion slot.

↓ Done



## Setting up a nonencrypted network connection

1

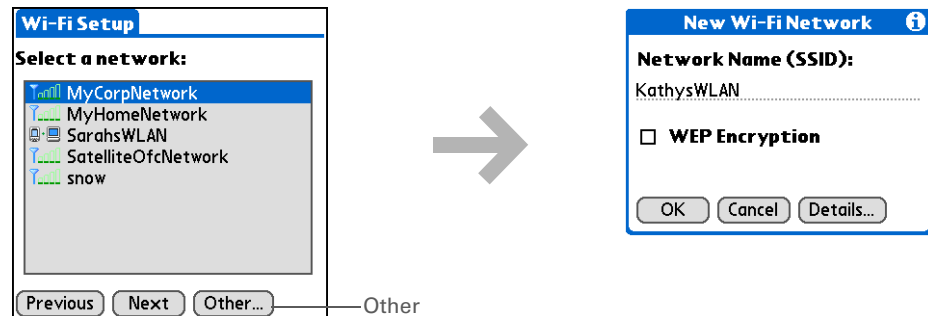
In the Applications/Home screen , select Wi-Fi Setup  .

2

Select the network you want to connect to:

- a. Select Next. Select from the list of available networks, and select Next again.
- b. If the network does not appear in the list, select Other and enter the network name (SSID). Then select OK.

**NOTE** If you select a network that is not available, your handheld tries to connect to any available network.



- c. Select Done.

 Done

**[ ! ] Before You Begin**

Make sure you get the following information from your network administrator:

- WEP key(s), key type, and key index (if needed)

OR

- WEP passphrase

**\* Tip**

If you are adding WEP encryption to a network that you have already set up, see [Editing Wi-Fi network settings](#).



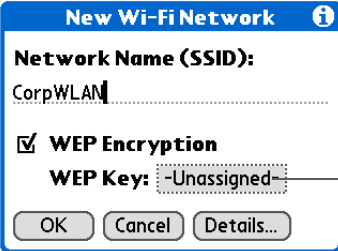
**» Key Term**

**WEP** Stands for “wired equivalent privacy.” WEP is a standard encryption method used to improve security for Wi-Fi network connections.

## Setting up a WEP-encrypted network connection

Follow these steps to set up a Wi-Fi network with WEP key encryption. For corporate networks, check with your network administrator to get the required settings. For home networks, use the same WEP key settings for your handheld that you used to set up WEP on your network access point.

A WEP key can be ASCII text, a hexadecimal number, or a passphrase. If you are given a passphrase and have problems, ask your IT administrator for the hex equivalent and use it instead of the passphrase. If you use an Apple Airport Base Station, refer to the Airport Admin Utility for the equivalent network password.

<b>1</b>	In the Applications/Home screen  , select Wi-Fi Setup  .
<b>2</b>	Select Next, and then select Other.
<b>3</b>	<p>Enter the network information:</p> <ol style="list-style-type: none"> <li>Enter the network name (SSID).</li> <li>Check the WEP Encryption box.</li> <li>Select the WEP Key box.</li> </ol> <div style="display: flex; align-items: center;">  <div style="margin-left: 10px;">WEP Key box</div> </div> <p><b>Continued</b></p>

**\* Tip**

WEP key encryption ranges from 40-bit to 128-bit. 40-bit keys are often called 64-bit, and 104-bit keys are sometimes called 128-bit because the other 24 bits are automatically assigned.

**4**

Select the Key Type pick list and select the network's WEP key type:

**40-bit hex** Key format is a 10-digit hexadecimal number.

**40-bit ASCII** Key format is a five-character string.

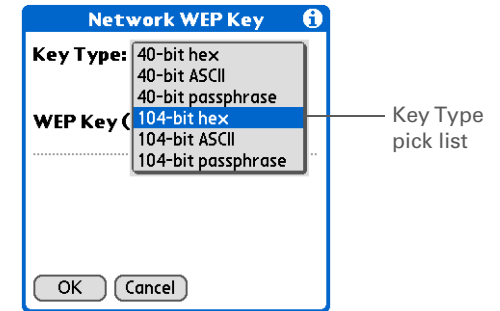
**40-bit passphrase** Key format is a variable-length string.

**104-bit hex** Key format is a 26-digit hexadecimal number.

**104-bit ASCII** Key format is a 13-character string.

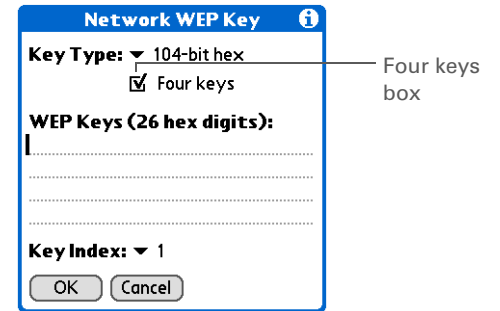
**104-bit passphrase** Key format is a variable-length string.

➤ **Continued**



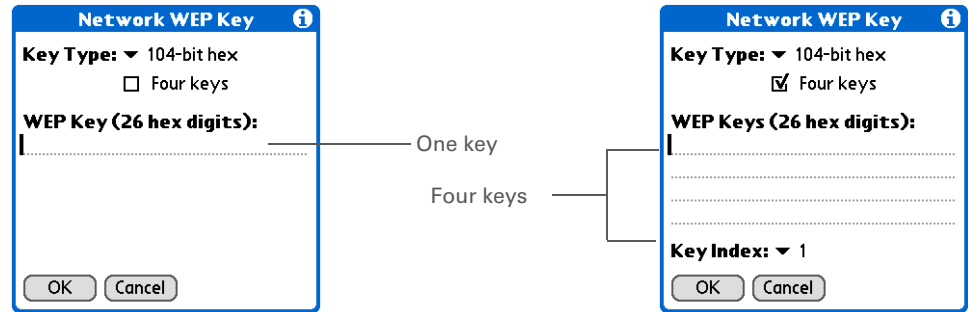
5

If your network requires four keys, check the Four keys box.  
  
If you don't select the Four keys box, you enter only one key.



6

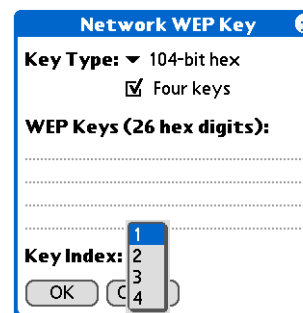
Enter the WEP key(s). If the Four keys box is checked, you enter four keys.



➤ Continued

7

If you checked the Four keys box, select the Key Index pick list and select an index number.



8

Select OK. Then select Next and select Done.

↓ Done

\* **Tip**



You can view the Wi-Fi signal strength on the Command toolbar by drawing the Command stroke. The Wi-Fi signal strength indicator appears at the far right of the Command toolbar. If you have an active VPN connection, a lock icon appears next to the signal strength indicator.



## Connecting to a network

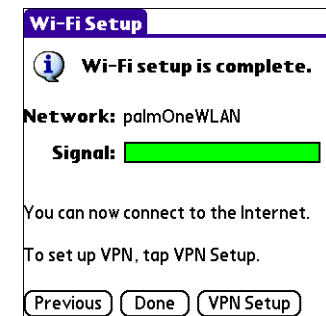
Once you have set up a network connection, you can access that network anytime you are within range of a Wi-Fi access point on the network, or for a peer-to-peer connection, within range of the peer Wi-Fi device.

1

In the Applications/Home screen , select Wi-Fi Setup .

2

Select Next. Then select from the list of available networks and select Next again.



3

After your handheld connects, select Done.

 Done

# Synchronizing Using a Wi-Fi® Connection

## [ ! ] Before You Begin

Make sure the computer you want to synchronize with has the following:

- Windows OS
- Palm® Desktop software with HotSync® Manager turned on
- TCP/IP support
- Access to a broadband network, such as a company network or DSL

Need to synchronize but can't get back to the office? Once you set up the Wi-Fi® network connection and prepare your computer, you can synchronize your handheld anytime your PC is turned on and accessible via a network, and you are within range of a Wi-Fi access point.


**[ ! ] IMPORTANT** The *first* time you synchronize your handheld, you must use a local, direct connection, or infrared or Bluetooth® communication, rather than a modem or network. Refer to your handheld *User Guide* for instructions.

**NOTE** If your home or corporate network is secured by VPN (virtual private network), you need to set up a VPN account on your handheld before you can synchronize using a Wi-Fi connection. See [Using a VPN Account](#).

## Preparing your computer

Before you can synchronize wirelessly, you need to set up your Windows network computer for network synchronizing.

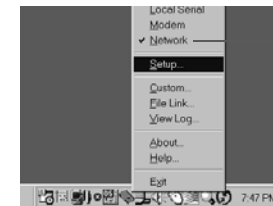
**1**

Click the HotSync Manager icon  in the lower-right corner of the Windows task bar.

**2**

From the HotSync Manager menu, select Network if it is not already selected.

➤ Continued



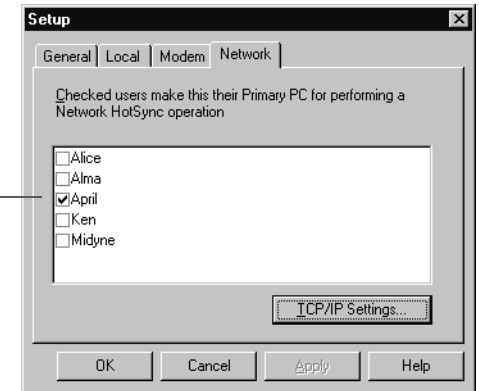
Network is selected.

**3**

Set up your username:

- a. From the HotSync Manager menu, select Setup.
- b. Click the Network tab and select your username if it is not already selected.

**NOTE** If your username does not appear, you need to add it to your computer by synchronizing your handheld using a local, direct connection (cable/cradle), or infrared or Bluetooth® communication. See your handheld *User Guide* for instructions.



Checkmark indicates name is selected.

**4**

Click OK, and then synchronize your handheld with your computer using a local direct connection (cable/cradle).

↓ Done

**[ ! ] Before You Begin**

Get the following information from your network administrator:

- Network name assigned to your computer



OR

- Network IP address assigned to your computer

## Preparing your handheld

Follow these steps the first time you synchronize wirelessly to set up your network connection on your handheld.

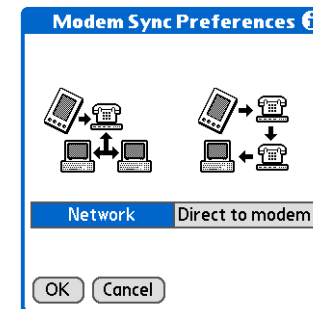
**1**

In the Applications/Home screen , select HotSync .

**2**

Select Network in the Modem Sync Preferences dialog box:

- Open the menus.
- Select Options, and then select Modem Sync Prefs.
- Select Network.
- Select OK.

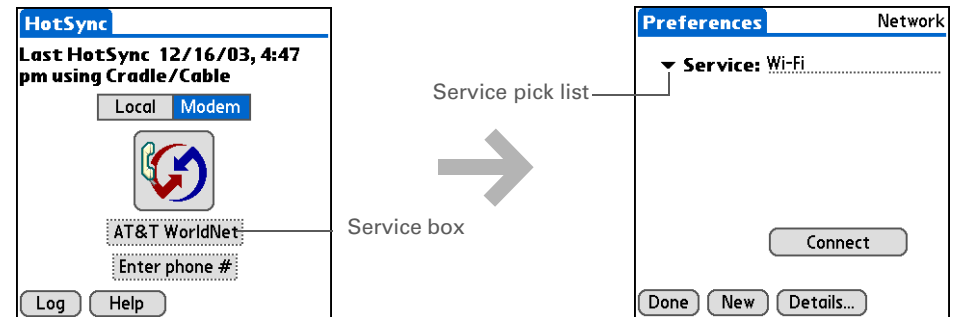


➤ **Continued**

**3**

Select the service for your Wi-Fi network:

- a. Select Modem.
- b. Select the service box.
- c. Select the Service pick list and select Wi-Fi.
- d. Select Done.



↘ Continued

## 4

Verify the information about your computer is correct:

- a. Open the menus.
- b. Select the Options menu, and then select Primary PC Setup.
- c. Verify that the name and IP address for your computer is correct. Edit the information if necessary.
- d. Select OK.

↓ Done

Your PC's  
network name

Your PC's network  
IP address

**Primary PC Setup** ⓘ

**Primary PC Name:**  
jet.star.com

**Primary PC Address:**  
192.168.168.103



**Subnet Mask(optional):**

OK Cancel

## Synchronizing your handheld using a Wi-Fi connection

After you prepare your computer and handheld for wireless network synchronization, you can synchronize the handheld from any Wi-Fi access point.

### 1

In the Applications/Home screen , Select HotSync .

**[ ! ] IMPORTANT** Make sure your computer is on before synchronizing wirelessly.

### 2

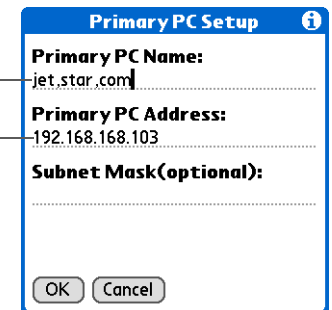
**[ & ] OPTIONAL** If you are synchronizing to a different computer than you previously used for synchronization, enter information about the computer:

- Open the menus.
- Select the Options menu, and then select Primary PC Setup.
- Enter the computer's name or IP address.
- Select OK.

↘ Continued

Your PC's  
network name

Your PC's network  
IP address



**Primary PC Setup** ⓘ

**Primary PC Name:**  
jet.star.com

**Primary PC Address:**  
192.168.168.103

**Subnet Mask(optional):**

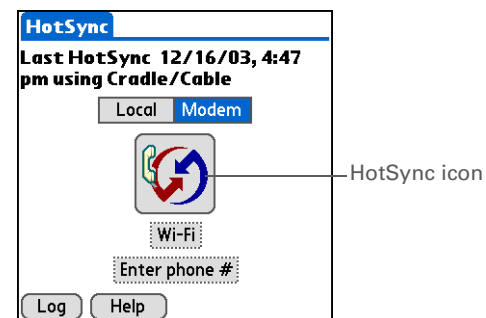
OK Cancel

**3**

Select Modem, and then select the HotSync icon.

**NOTE** The Enter phone # field is not used for Wi-Fi connections.

↓ Done



# Using a VPN Account

## » Key Term

**VPN** (Virtual private network) is a secure authentication service that uses methods such as Point-to-Point Tunneling Protocol (PPTP) to allow you to go through your company's firewall (security layer) and access the company's internal network. The VPN software included with your Wi-Fi® card requires access to a VPN server running the PPTP protocol.

## » Key Term

**IPsec** (Internet protocol security) is a set of protocols for security at the network or packet processing layer of network communication.

Many private networks, such as home or corporate LANs, are secured virtual private networks (VPNs). If your corporate network is a VPN, you need to use a VPN account to access your corporate email account or synchronize your handheld with your office PC.

Follow the instructions in this chapter to set up or edit VPN account information, switch between VPN accounts, or connect your VPN account. Depending on which handheld you have, see the following:

- **Working with VPN accounts on your Tungsten™ T5 or Tungsten™ E2 handheld**
- **Working with VPN accounts on your Tungsten™ T3 or Zire™ 72 handheld**

**[ ! ] IMPORTANT** Check with your network administrator to find out if your corporate network requires the use of a VPN account and to obtain any setup information. The VPN client included with the Wi-Fi Card supports the PPTP protocol. If your corporate VPN uses the IPsec protocol instead of PPTP, you'll need to install IPsec VPN client software on your handheld, which you can purchase separately.

**[ ! ] Before You Begin**

To set up a VPN on your handheld, you need the following information from your network administrator:

- Your VPN username
- Your VPN password
- The VPN server name or address

Also, ask your administrator about the following:

- Is encryption required for VPN data?
- Should all TCP/IP data be sent to the VPN server?
- Is a static DNS address or IP address required?

## Working with VPN accounts on your Tungsten™ T5 or Tungsten™ E2 handheld

Before you can use VPN for Wi-Fi® network connections, you need to set up a VPN account on the handheld. The handheld uses this VPN account when you select the Connect VPN button as described in [Connecting to your VPN using your Tungsten T5 or Tungsten E2 handheld](#). The Tungsten E2 handheld has an auto-connect option in the VPN Preferences. For more information, see [Using Auto-Connect on the Tungsten E2 handheld](#).

### Setting up a VPN account on your Tungsten T5 or Tungsten E2 handheld

**1**

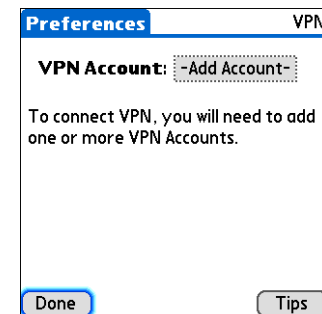
Start the VPN setup:

- Go to Applications  and select Prefs .
- Select VPN.

**2**

Select the VPN Account pick list, and then select Add Account.

↳ Continued



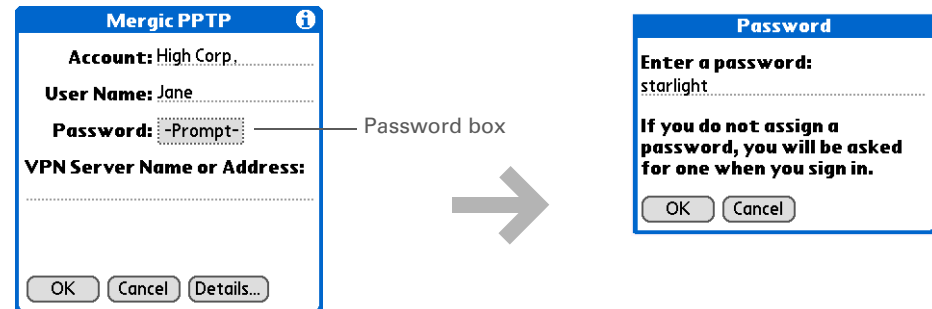
**+ Did You Know?**

The VPN client software that comes with your Tungsten T5 or Tungsten E2 handheld automatically stores your password so that you don't need to enter it each time you connect.

**3**

Set up the VPN account:

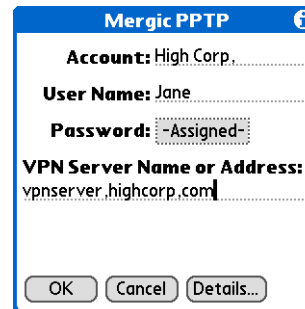
- a. Enter a name for the account.
- b. Enter your VPN username.
- c. Select the Password box and enter your VPN password.
- d. Select OK.



↘ Continued

**Cont'd.**

- e. Enter the VPN server name or IP address.



Mergic PPTP

Account: High Corp.

User Name: Jane

Password: -Assigned-

VPN Server Name or Address:  
vpnserver.highcorp.com

OK Cancel Details...

**4**

**[ & ] OPTIONAL** Change VPN options if required by your VPN administrator.

- a. Select Details.
- b. Check or uncheck the following options:

**Encryption: Required** When checked, all VPN data is encrypted. Uncheck the box if your VPN server does not encrypt data.

**Send All: To VPN** When checked, all TCP/IP data goes to the private network. Uncheck the box if you want only DNS requests and TCP/IP data specifically destined for the private network to be sent to the private network.

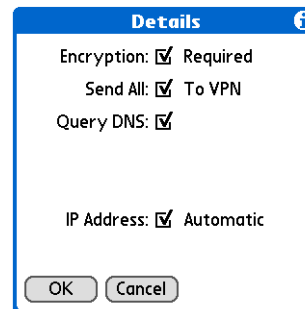
↘ **Continued**

- \* **Tip**  
Select **Tips** in the **VPN Preferences** to view information about using VPN accounts, including why a VPN connection can fail.
- + **Did You Know?**  
In the web browser included with your Tungsten T5 or Tungsten E2 handheld, you can connect to your VPN by selecting **Connect VPN** from the **Options** menu.

**Cont'd.**

**Query DNS** When checked, the handheld gets the domain server name from the VPN server. Uncheck the box if you need to enter a static DNS address.

**IP Address: Automatic** When checked, the handheld gets the IP address from the private network. Uncheck the box if you need to enter a static IP address.

**5**

Select OK.

**Done** Your VPN account is now ready to use.

## Connecting to your VPN using your Tungsten T5 or Tungsten E2 handheld

You can connect to your VPN using the VPN Preferences screen. Some applications may allow you to open the VPN Preferences panel or may have settings that specify whether VPN is used by that application. To connect to a VPN, you must have an active network connection.

If you connect to your VPN from the VPN Preferences screen without first connecting to a network, your handheld asks if you want to connect to an available Wi-Fi network. After the connection to the Wi-Fi network is made, the VPN connection is made and remains active until one of the following happens:

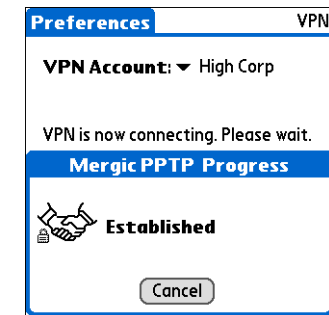
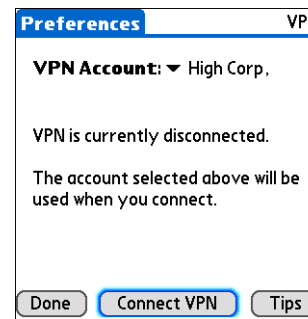
- Your handheld is shut off.
- You disconnect the VPN connection manually in VPN Preferences.
- The connection to the Wi-Fi network is disrupted.

When using many applications, such as the version of the VersaMail® application included with your handheld, a VPN connection is not made automatically. You need to connect to the VPN manually in VPN Preferences. If you are using a Tungsten E2 handheld, you can select the auto-connect preference. For more information, see [\*\*Using Auto-Connect on the Tungsten E2 handheld.\*\*](#)

**1** Go to Applications , select Prefs , and then select VPN.

**2** Select the VPN Account pick list, and then select your account.

**3** Select Connect VPN.



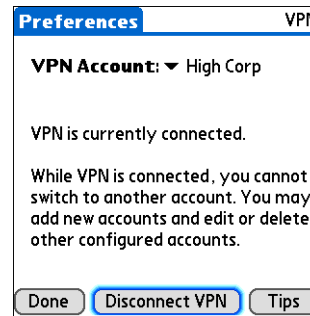
**NOTE** Check your VPN connection by drawing the Command stroke to display the Command toolbar. Then verify that a lock icon appears in the Wi-Fi signal strength indicator at the far right of the toolbar.



↘ Continued

## 4

Select Disconnect VPN when you are finished.






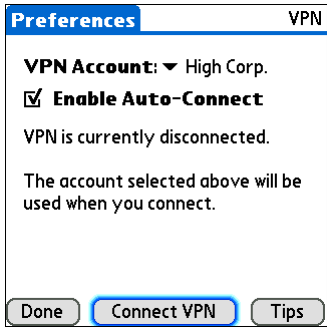
**[ ! ] IMPORTANT** You cannot delete or edit a VPN account when you have an active connection. Other VPN accounts cannot be connected until this account is disconnected. You can, however, add, edit, or delete other VPN accounts.

↓ Done

## Using Auto-Connect on the Tungsten E2 handheld

On the Tungsten E2 handheld, you can select Enable Auto-Connect in the VPN Preferences, as shown below. When you make a Wi-Fi network connection, your VPN connection will be automatically established using the currently selected VPN account.

- 1** Go to Applications , select Prefs , and then select VPN.
- 2** Select the VPN Account pick list, and then select your account.
- 3** Select Enable Auto-Connect, and then select Done.  
 Done



## Switching between VPN accounts on your Tungsten T5 or Tungsten E2 handheld

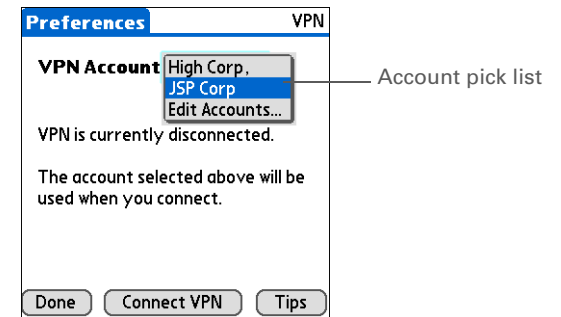
If you have set up multiple VPN accounts, you can switch from one to another if no VPN connection is currently active.

**1**

Go to Applications , select Prefs , and then select VPN.

**2**

Select the account from the VPN Account pick list.

**Done**

The VPN account that is selected is used for all future VPN connections whether you connect manually or automatically.

## Editing a VPN account on your Tungsten T5 or Tungsten E2 handheld

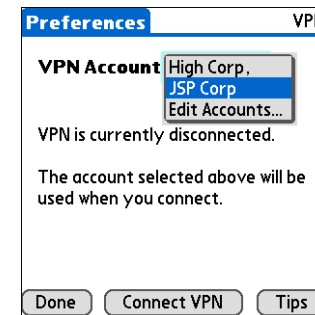
**[ ! ] IMPORTANT** You cannot delete or edit a VPN account if this account has an active VPN connection. You can, however, add, edit, or delete other VPN accounts.

**1**

Go to Applications , select Prefs , and then select VPN.

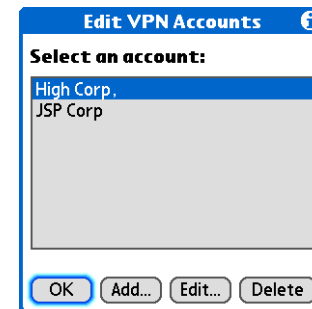
**2**

Select Edit Accounts from the VPN Account pick list.

**3**


Select the account, and then select Edit.

➤ Continued



4

Edit the account name, username, password, or VPN server name or address if needed.



The screenshot shows a dialog box titled "Mergic PPTP" with an information icon in the top right corner. The dialog contains the following fields and values:

- Account:** High Corp.
- User Name:** Jane
- Password:** -Assigned-
- VPN Server Name or Address:** vpnserver.highcorp.com

At the bottom of the dialog are three buttons: "OK", "Cancel", and "Details...".

Tap to display instructions.

5

Select OK twice when you are finished editing the account.

↓ Done

**[ ! ] Before You Begin**

To set up VPN on the handheld, you need the following information from your network administrator:

- Your VPN username
- Your VPN password
- The VPN server name or address

Also, ask your administrator about the following:

- Is encryption required for VPN data?
- Should all TCP/IP data be sent to the VPN server?
- Is a static DNS address or IP address required?

## Working with VPN accounts on your Tungsten™ T3 or Zire™ 72 handheld



To use a VPN account for Wi-Fi network connections, you must first set up the account on your handheld. You can also edit or delete a VPN account in the VPN Preferences.

### Setting up a VPN account on your Tungsten T3 or Zire 72 handheld

Before you can use VPN for Wi-Fi® network connections, you need to set up a VPN account on the handheld. The handheld uses this VPN account for all future Wi-Fi network connections as long as VPN is enabled in Preferences.

**1**

Start the VPN setup:

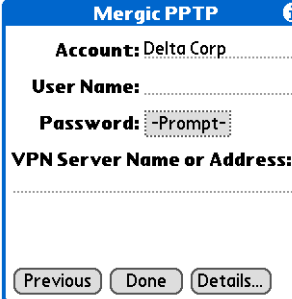
- Go to the Home  screen and select VPN Setup .
- Select Next.

**2**

Set up the VPN account:

- Enter a name for the account.

➤ Continued



**Mergic PPTP** ⓘ

**Account:** Delta Corp .....

**User Name:** .....

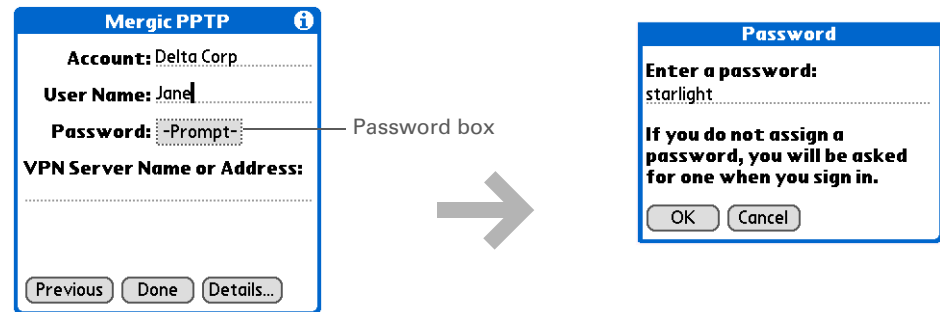
**Password:** -Prompt-

**VPN Server Name or Address:** .....

Previous Done Details...

**Cont'd.**

- b. Enter your VPN username.
- c. Select the Password box and enter your VPN password.
- d. Select OK.



- e. Enter the VPN server name or IP address.

➤ **Continued**

**3**

**[ & ] OPTIONAL** Change VPN options if required by your VPN administrator.

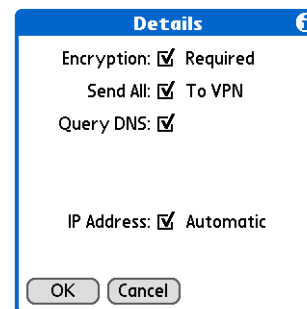
- a. Select Details.
- b. Check or uncheck the following options:

**Encryption: Required** When checked, all VPN data is encrypted. Uncheck the box if your VPN server does not encrypt data.

**Send All: To VPN** When checked, all TCP/IP data goes to the private network. Uncheck the box if you want only DNS requests and TCP/IP data specifically destined for the private network to be sent there.

**Query DNS** When checked, the handheld gets the domain server name from the VPN server. Uncheck the box if you need to enter a static DNS address.

**IP Address: Automatic** When checked, the handheld gets the IP address from the private network. Uncheck the box if you need to enter a static IP address.



↘ Continued

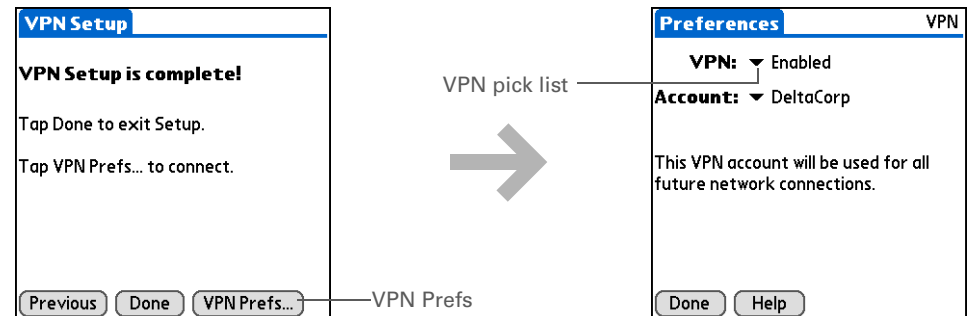
4

Select OK.

5

Enable the VPN account:

- a. Select VPN Prefs.
- b. Select Enabled from the VPN pick list.
- c. Select Done twice.



**NOTE** Check your VPN connection by drawing the Command stroke to display the Command toolbar. Then verify that a lock icon appears in the Wi-Fi signal strength indicator at the far right of the toolbar.





↓ Done

The selected VPN service is enabled and is used for future connections.

## Switching between VPN accounts on your Tungsten T3 or Zire 72 handheld

If you have set up multiple VPN accounts, you can easily switch from one to the other.

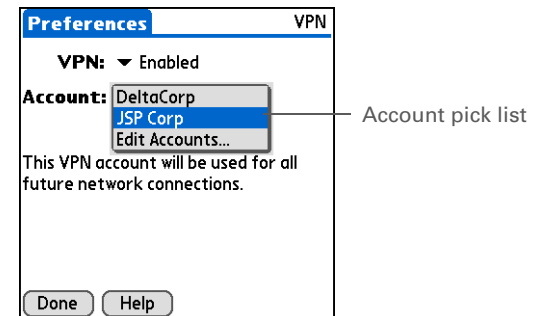
**1**

Go to the Home screen  and select Prefs , and then select VPN.

**2**

Select the VPN account:



- If VPN is disabled, select Enabled from the VPN pick list.
- Select the account from the Account pick list.
- Select Done.

**Done**

The selected VPN service is enabled and is used for future connections.

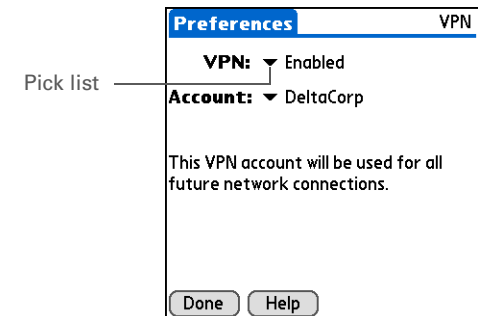
## Editing a VPN account on your Tungsten T3 or Zire 72 handheld

**1**

Go to the Home  screen and select Prefs , and then select VPN.

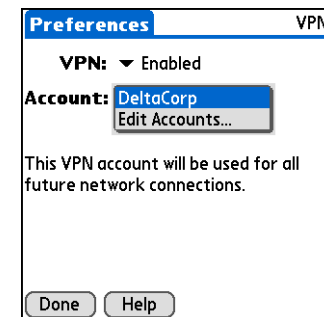
**2**

Select Enabled from the VPN pick list.

**3**

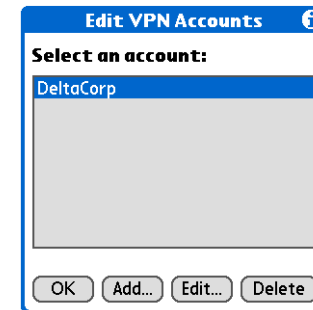
Select Edit Accounts from the Account box.

▼ Continued



4

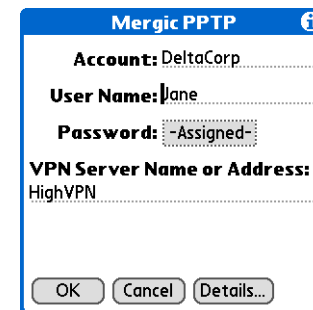
Select the account, and then select Edit.



5

Edit the account name, username, password, or VPN server name or address if needed.

When you are finished editing the information, select OK, and then select the VPN account that you want to be active. Select OK. Select Done in the VPN Preferences to save all your settings.



Tap to display instructions.



**Done**

Your VPN service is enabled. The new account settings are used for all future connections using this VPN account.

## Disabling and enabling VPN on your Tungsten T3 or Zire 72 handheld

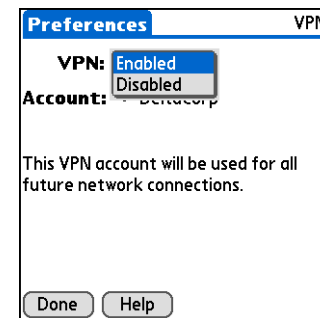
You can disable VPN whenever you don't want to use your VPN account for network connections. For example, you may find it faster to browse the public Internet without connecting through your VPN account and private LAN. Or you may need to disable VPN in order to send personal email if this activity is not permitted by your private LAN security.

**1**

Go to the Home  screen and select Prefs , and then select VPN.

**2**

Select the VPN pick list and select Disabled (or Enabled). Then select Done.



**Done** VPN service is disabled (or enabled) for future connections.



# Managing Wi-Fi® Network Connections

This chapter provides instructions for conserving battery power, checking Wi-Fi® signal strength, and viewing or editing your Wi-Fi network connection settings.

## Turning Wi-Fi on or off

You may want to turn Wi-Fi off if you are not planning on using it for an extended period of time, but want to leave the card in the expansion slot. As long as Wi-Fi is turned on, the Wi-Fi card uses a small amount of power even when you are not connected to a network. Wi-Fi turns off automatically when you remove the card from the expansion slot.


1

In the Applications/Home screen , select **Prefs** , and then select **Wi-Fi**.

2

Select **Off** or **On** from the Wi-Fi pick list.

**NOTE** Before you turn off Wi-Fi, wait a few seconds for the connection to be re-established, and then select **Off**.

 **Done**

Preferences
Wi-Fi

**Wi-Fi:** ▼ Off

Pick list



Done
Info
Help

**NOTE** A green LED indicator on the front of the Wi-Fi card glows steadily if the card is properly inserted in the SDIO slot and Wi-Fi is turned on. The LED indicator blinks when the connection to an access point is being negotiated, and turns off when Wi-Fi is turned off.

## Viewing signal strength

You can monitor the strength of your Wi-Fi signal when you are connected to a network. If the signal is weak, expect the connection to be unreliable.

**1**

In the Applications/Home screen , select **Prefs** .

**2**

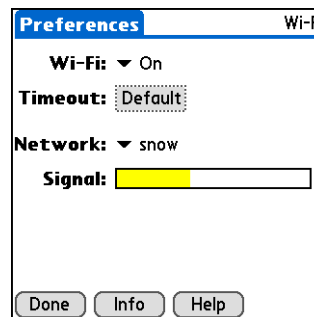
Select **Wi-Fi**.

The signal bar shows the signal strength for the selected network.

**Red** Indicates a weak signal.

**Yellow** Indicates a medium-strength signal.

**Green** Indicates a very strong signal.

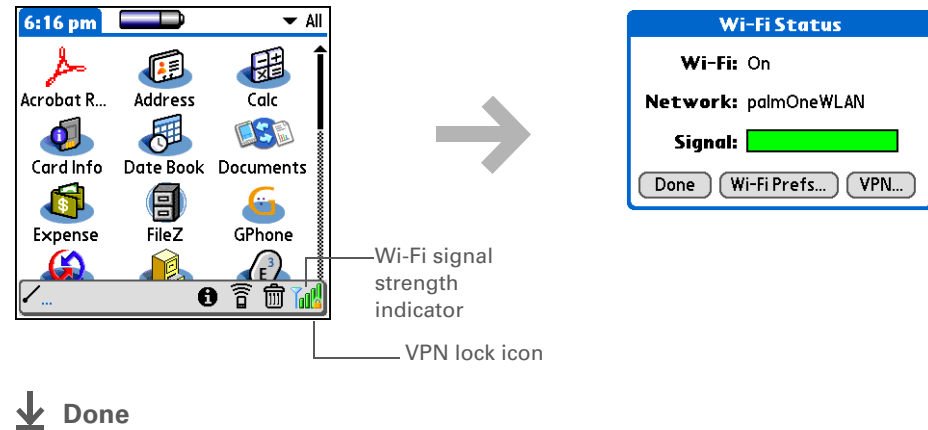


↘ **Continued**

**Cont'd.**

You can also view Wi-Fi signal strength on the Command toolbar by drawing the Command stroke. If a VPN connection is active, a lock icon appears next to the Wi-Fi signal strength indicator.



Select the Wi-Fi signal strength indicator in the Command toolbar to display Wi-Fi status. You can also display the preference settings for Wi-Fi or VPN, by selecting the Wi-Fi Prefs or VPN buttons.



## Viewing Wi-Fi connection information

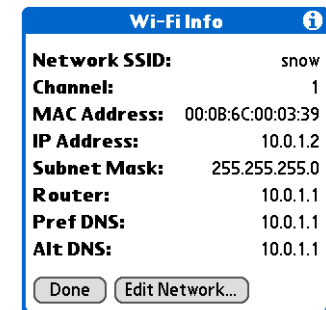
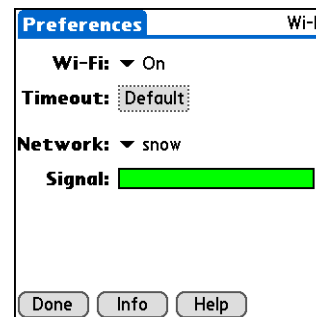
You may need to view connection information in order to provide your IT administrator with your MAC (media access control) address or other information.

**1**

In the Applications/Home screen , select **Prefs** , and then select **Wi-Fi**.

**2**

Select **Info**.





↓ Done

## Conserving battery power

You can extend the battery power by turning on the Conserve Power option and restricting roaming. When the Conserve Power option is off, the Wi-Fi card uses full power to roam continuously and search for closer access points. This can improve Wi-Fi performance, but shortens battery life.

Constant use of the Wi-Fi card can deplete the handheld battery quickly. We recommend that you plug the handheld into a charging device or attach an auxiliary battery when using the Wi-Fi card for extended periods.

**1**

In the Applications/Home screen , select Prefs , and then select Wi-Fi.

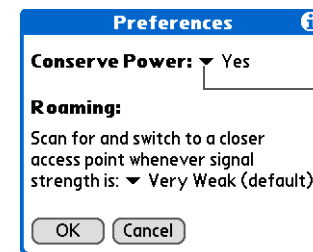
**2**

Open the menus, and then select Preferences on the Options menu.

**3**

Select Yes from the Conserve Power pick list.

➤ **Continued**



Pick list

4

Select the Roaming pick list and select a setting.

**Very Weak** Begins roaming only when the signal is very weak. This setting is most conserving of battery power.

**Weak** Begins roaming when the signal is weak.

**Moderate** Begins roaming when the signal is moderate.



5

Select OK.

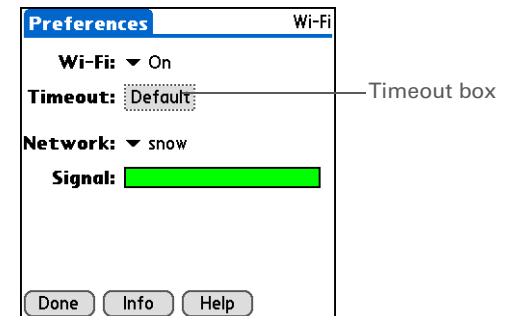
↓ Done

## Changing the timeout period

You can control how long the handheld remains connected to a Wi-Fi network when it is not actively sending or receiving data. By default, the handheld remains connected for three minutes or until the display powers off as specified in the Power Preferences.

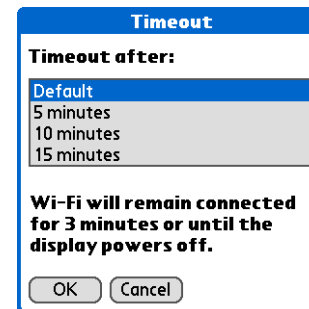
**1** In the Applications/Home screen , select Prefs , and then select Wi-Fi.

**2** Select the Timeout box.



**3** Select a timeout setting and select OK.

↓ Done



**[ ! ] Before You Begin**

If you are joining an existing peer-to-peer network, you need to know the network SSID.

If you are initiating a peer-to-peer network, simply make up your own network SSID and tell the others who will be joining your network.



**» Key Term**

**Peer-to-peer (ad hoc) network** Two or more computers or devices that communicate directly with each other using Wi-Fi, without going through a wireless access point or a wired network.

## Setting up a peer-to-peer (ad hoc) network connection

You can connect your handheld directly to another Wi-Fi device, such as a laptop computer or another handheld. The devices automatically negotiate a communications channel and IP addresses, so you don't need to enter this information unless you want to use a specific channel or IP address. You can only set the Wi-Fi channel manually when you are setting up a peer-to-peer (ad-hoc) network. The Wi-Fi channel is automatically determined when using access point (infrastructure) network access.

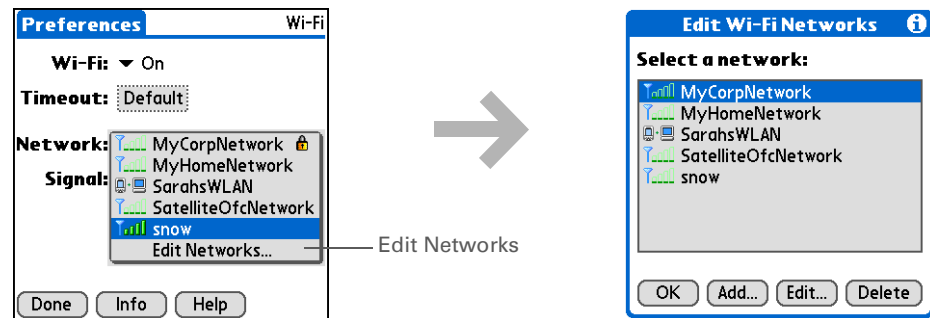
**1**

In the Applications/Home screen , select **Prefs** , and then select **Wi-Fi**.

**2**

Select the network you want to connect to:

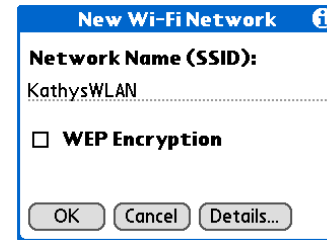
a. Select the Network pick list and select **Edit Networks**.



↘ Continued

**Cont'd.**

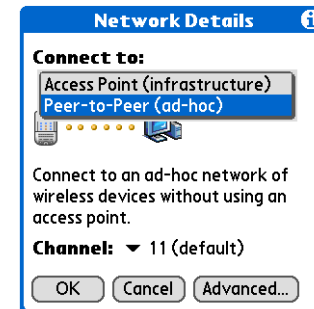
- b. Select the network and then select Edit. If the network does not appear in the list, select Add and enter the network name (SSID).

**3**

Set up the network connection:

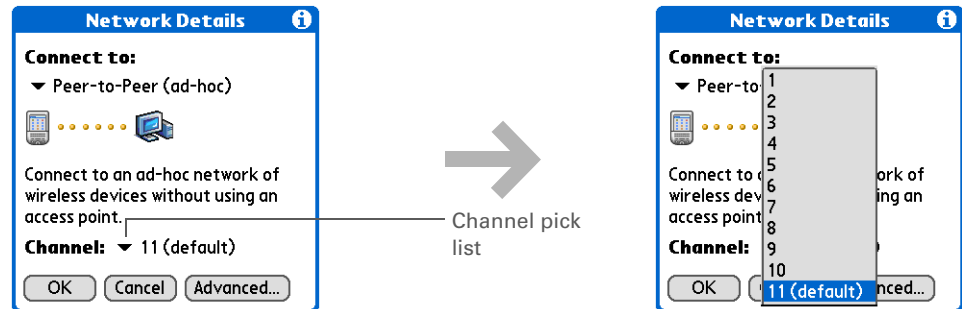
- a. Select Details.
- b. Select Peer-to-Peer (ad-hoc) from connection type pick list.

➤ **Continued**



4

**[ & ] OPTIONAL** To use a specific communications channel, select the channel number from the Channel pick list.

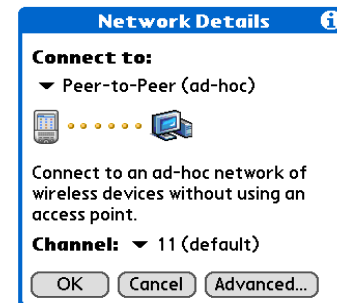


5

**[ & ] OPTIONAL** To manually set your IP or DNS address, follow these steps:

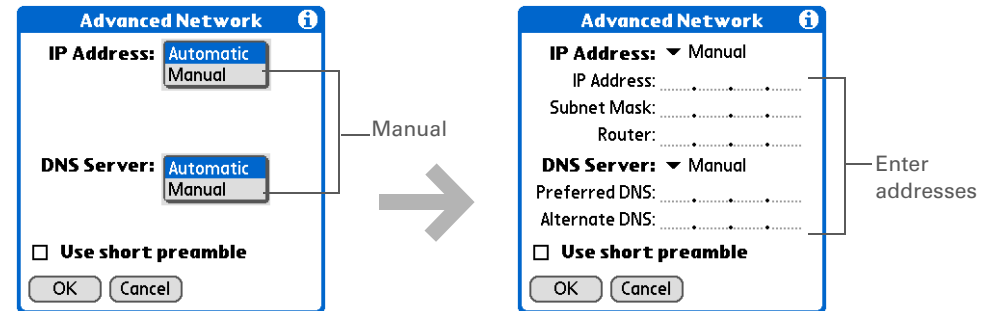
a. Select Advanced.

➤ **Continued**



**Cont'd.**

- b. Select Manual from the IP Address or DNS Server pick list.
- c. Enter the address.
- d. If you want to use a short preamble, select the Use short preamble box.

**6**



Select OK.

↓ Done

## Editing Wi-Fi network settings

Once you set up a network on the handheld, you can change the settings at any time. For example, you can change the network name, add or edit WEP encryption settings, or change the IP or DNS address.

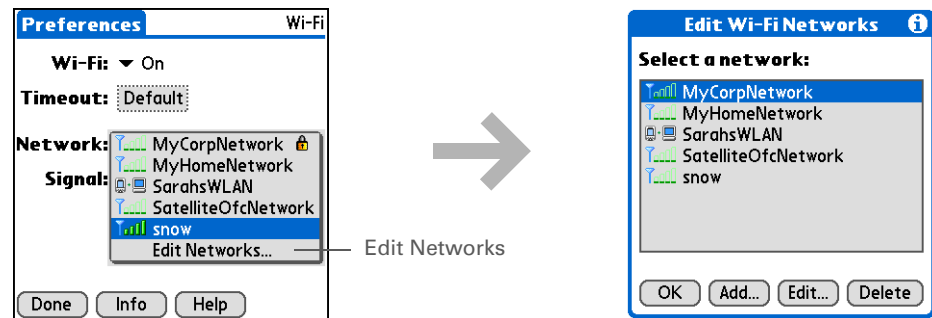
**1**

In the Applications/Home screen , select Prefs , and then select Wi-Fi.

**2**

Select the network:

- a. Select Edit Networks from the Network pick list.
- b. Select the network in the list, and then select Edit. If the network does not appear in the list, select Add and enter the network name (SSID).



➤ Continued

**3**

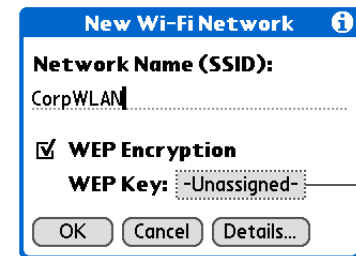
To change the network name, edit the current name.

**4**

To add or edit WEP encryption settings:

- Check the WEP Encryption box.
- Select the WEP Key box.

➤ Continued



WEP Key box

**Cont'd.**

c. Select the Key Type pick list and select a WEP key type:

**40-bit hex** Key format is a 10-digit hexadecimal number.

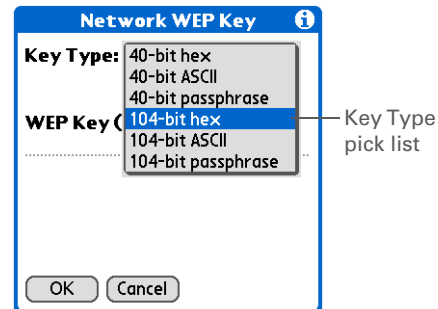
**40-bit ASCII** Key format is a five-character string.

**40-bit passphrase** Key format is a variable-length string.

**104-bit hex** Key format is a 26-digit hexadecimal number.

**104-bit ASCII** Key format is a 13-character string.

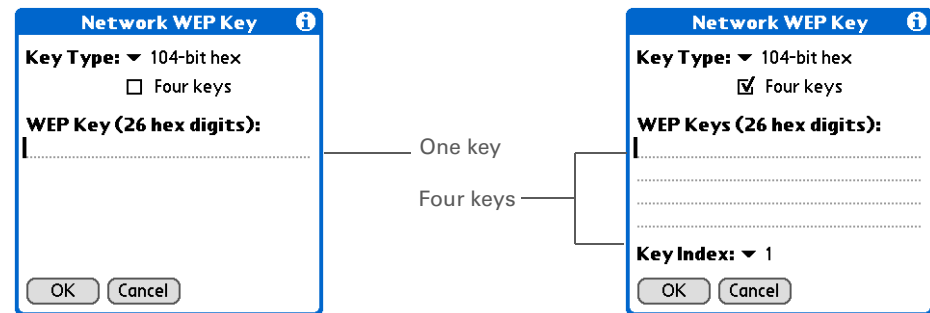
**104-bit passphrase** Key format is a variable-length string.



↘ Continued

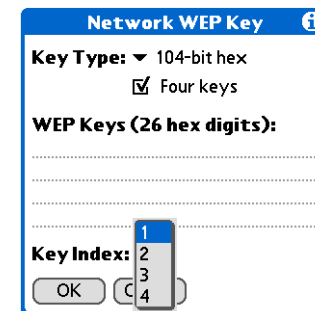
**Cont'd.**

- d. Check the Four keys box to enter four keys or to generate four keys from a passphrase. If you don't check the Four keys box, you enter one key.
- e. Enter the WEP key(s).



- f. Select the Key Index pick list and select an index number if you checked the Four keys check box.
- g. Select OK.

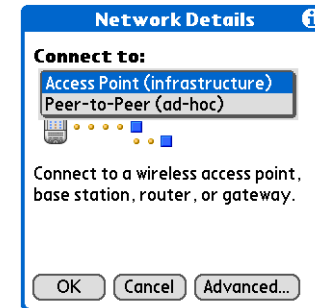
➤ Continued



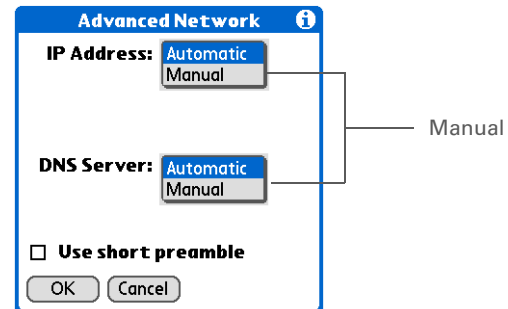
## 5

To change the IP or DNS settings:

- a. Select Details.
- b. Select Advanced.



- c. Select the IP address or DNS server address and select Manual.



↘ Continued

**Cont'd.**

d. Add the addresses and select OK.

**Advanced Network** ⓘ

**IP Address:** ▼ Manual  
IP Address: .....  
Subnet Mask: .....  
Router: .....

**DNS Server:** ▼ Manual  
Preferred DNS: .....  
Alternate DNS: .....

**Use short preamble**

OK Cancel

Enter addresses

e. If you need to use a short preamble, select the Use short preamble box.

**6**

Select OK until you return to the Wi-Fi Preferences screen, and then select Done.

↓ Done

# Common Questions

If you have a problem with your Wi-Fi® card by palmOne, review the questions in this section and the following resources:

- This guide
- The *Wi-Fi Card by palmOne Getting Started Guide* that came with your Wi-Fi card

If you are still having problems, contact technical support by going to [www.palmOne.com/support](http://www.palmOne.com/support).

## Why can't I make a wireless connection?

- Your handheld is designed to connect to a wireless access point. Consult your wireless access point manual and the manufacturer web site for troubleshooting information regarding your wireless access point.
- Most corporate networks have security policies that require special setup procedures. Contact your IT administrator for information.

## Why can't I make a wireless connection when traveling internationally?

Your Wi-Fi card operates in the Industry Scientific and Medical (ISM) band and supports channels 1 through 11. In countries where channels 12 through 14 are also used, you may encounter access points using these channels and be unable to make a wireless connection. For information on which channels are supported in other countries, see [Wi-Fi® Frequencies](#).

### Why doesn't the VPN included with my handheld work with my corporate network?

The VPN client included with Wi-Fi card is based on the PPTP protocol. See [www.palmOne.com/support](http://www.palmOne.com/support) for links to and information about other VPN solutions.

### Why can't I synchronize my handheld wirelessly?

- Check the signal status to make sure you are connected to your wireless network. See [Viewing signal strength](#).
- Make sure the PC selected for Network in the Modern Sync Preferences is your PC. See [Preparing your handheld](#).

### Why doesn't the Wi-Fi card software work after I restored my handheld from a backup or performed a hard reset?

After restoring a handheld from a backup, for example, when replacing a lost device, or after performing a hard reset on your handheld, you must reinstall the Wi-Fi card software. The Wi-Fi card software components are not backed up when you synchronize your handheld and your computer. Using a backup card from palmOne or third-party backup and restore utilities to restore your handheld doesn't properly reinstall the Wi-Fi Card software.

### Why is my VPN connection failing?

Make sure that your VPN account settings are properly configured. Some reasons why a VPN connection fails are the following:

- The password you are using is incorrect or expired.
- You entered typos in the VPN server name or address.
- The VPN gateway is temporarily shut down.
- A firewall may be blocking VPN access.

Contact your IT administrator for more assistance.



## Contacting Technical Support

If you cannot solve your problem, go to [www.palmOne.com/support](http://www.palmOne.com/support) or send an email message to your regional Technical Support office.

Before requesting support, experiment a bit to reproduce and isolate the problem. When you do contact support, please be ready to provide the following information:

- The name and version of the operating system you are using
- The actual error message or state you are experiencing
- The steps you take to reproduce the problem
- The version of handheld software you are using and available memory

To find your handheld version and memory information:

1. Go to the Applications/Home screen .
2. Use the Graffiti<sup>®</sup> 2 Command stroke and select .
3. Select Version to see version numbers, and select Size to see the amount of free memory in kilobytes.

# Wi-Fi® Frequencies

» **Key Term**  
**ISM (Industry Scientific and Medical) band** An internationally recognized band for radio LANs that operates in the 2.4GHz range. There are 14 allocated channels within this band. The Wi-Fi card by palmOne supports channels 1 through 11.

Your Wi-Fi® card by palmOne operates in the Industry Scientific and Medical (ISM) band and supports channels 1 through 11. Channels 12, 13, and 14 aren't supported. If you travel to countries that support additional channels, there is a possibility that you will not be able to connect to an access point.

The following list identifies the channels available in various countries:

Channel ID	Frequency (MHz)	USA FCC	Canada IC	Europe/Asia Pacific ETSI	France	Japan MKK	Wi-Fi card by palmOne
1	2412	+	+	+	+	+	+
2	2417	+	+	+	+	+	+
3	2422	+	+	+	+	+	+
4	2427	+	+	+	+	+	+
5	2432	+	+	+	+	+	+
6	2437	+	+	+	+	+	+

Channel ID	Frequency (MHz)	USA FCC	Canada IC	Europe/Asia Pacific ETSI	France	Japan MKK	Wi-Fi card by palmOne
7	2442	+	+	+	+	+	+
8	2447	+	+	+	+	+	+
9	2452	+	+	+	+	+	+
10	2457	+	+	+	+	+	+
11	2462	+	+	+	+	+	+
12	2467			+	+	+	
13	2472			+	+	+	
14	2484					+	

# Product Regulatory Information

## FCC Statement

This device complies with part 15 of the FCC rules. Operation is subject to the following two conditions: (1) This device may not cause harmful interference, and (2) this device must accept any interference received, including interference that may cause undesired operation.

This equipment has been tested and found to comply with the limits for a Class B digital device, pursuant to Part 15 of the FCC rules. These limits are designed to provide reasonable protection against harmful interference in a residential installation. This equipment generates, uses, and can radiate radio frequency energy and, if not installed and used in accordance with the instructions, may cause harmful interference to radio communications. However, there is no guarantee that interference will not occur in a particular installation. If this equipment does cause harmful interference to radio or television reception, which can be determined by turning the equipment off and on, the user is encouraged to try to correct the interference by one or more of the following measures:

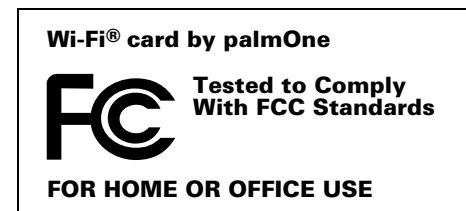
- Reorient or relocate the receiving antenna.
- Increase the separation between the equipment and receiver.
- Connect the equipment into an outlet on a circuit different from that to which the receiver is connected.
- Consult the dealer or an experienced radio/TV technician for help.

The use of shielded I/O cables is required when connecting this equipment to any and all optional peripheral or host devices. Failure to do so may violate FCC rules.

**[ ! ] IMPORTANT** Changes or modifications not covered in this manual must be approved in writing by the manufacturer's Regulatory Engineering Department. Changes or modifications made without written approval may void the user's authority to operate this equipment.

### Responsible Party:

palmOne, Inc.  
400 N. McCarthy Blvd.  
Milpitas, California 95035  
United States of America  
(408) 503-7500



## Canadian ICES-003 Statement

This Class B digital apparatus meets all requirements of the Canadian Interference-Causing Equipment Regulations.

Cet appareil numérique de la classe B respecte toutes les exigences du Règlement sur le matériel brouilleur du Canada.

## Brazilian Statement

"Este equipamento opera em caráter secundário, isto é, não tem direito à proteção contra interferência prejudicial, mesmo de estações do mesmo tipo, e não pode causar interferência a sistemas operando em caráter primário."

 **ANATEL** 0623-04-2322



(01)07898403934106



## CE Compliance Statement

This product was tested by palmOne, Inc. and found to comply with all the requirements of the EMC Directive 89/336/EEC as amended and the R&TTE Directive 99/5/EC.

## Declaration of Conformity

**palmOne, Inc., Declares the Product:** Wi-Fi® card by palmOne

**Model Name/Number:** WLAN6065SD

**Manufacturer's Name:** palmOne

**Manufacturer's Address:**

European Headquarters  
palmOne Europe Ltd.  
Buckhurst Court  
London Road  
Wokingham  
Berkshire, RG40 1PA - UK  
Tel.: +44 (0)118.974.2700

**Manufacturer's WWW Address:**

<http://euro.palmOne.com/uk/en/about/index.html>

Conforms with the following specifications:

- EN 55024: 1998 (Emissions & Immunity)
- EN55022:1998, CISPR 22 1997, Class B Radiated and Conducted Emissions
- IEC 61000-4-2, A1 1998-01, ESD Immunity, 4kV Contact, and 8kV Air Discharge
- IEC 61000-4-3: 1995 RF Immunity, 80-1000MHz, 3V/M, 1kHz, 80% A.M.
- ENV 50204:1996, RF Immunity, 895-905MHz, 3V/m, 200Hz, 50% AM
- IEC 61000-4-4: 1995 EFT Immunity, 1kV on AC port, 5/50nSec, 5kHs Rep. Freq.
- IEC 61000-4-5: 1995 Surge Immunity, 1.2/50uSec, 2kV(peak), Common Mode, 1kV(peak) Differential Mode
- EN61000-4-6:1996, Conducted Immunity, 150kHz-80MHz, 3V RMS, 1kHz, 80% AM
- IEC 61000-4-11: 1994, 100% Voltage Dip 0.5 period, 30% Dip 25 periods and >100% Dip 250 periods
- ETSI EN 300 328

## Restrictions in use of card in EU countries

**Danish**

Undertegnede Nemko erklærer herved, at følgende udstyr Wideband Transmission System Radio overholder de væsentlige krav og øvrige relevante krav i direktiv 1999/5/EF.

<b>Dutch</b>	<p>Hierbij verklaart Nemko dat het toestel [Wideband Transmission System Radio in overeenstemming is met de essentiële eisen en de andere relevante bepalingen van richtlijn 1999/5/EG.</p> <p>Bij deze verklaart [Naam van de fabrikant] dat deze [naam /type van het apparaat] voldoet aan de essentiële eisen en aan de overige relevante bepalingen van Richtlijn 1999/5/EC.</p>
<b>English</b>	<p>Hereby, Nemko, declares that this Wideband Transmission System Radio is in compliance with the essential requirements and other relevant provisions of Directive 1999/5/EC.</p>
<b>German</b>	<p>Hiermit erklärt Nemko, dass sich dieser/diese/dieses Wideband Transmission System Radio in Übereinstimmung mit den grundlegenden Anforderungen und den anderen relevanten Vorschriften der Richtlinie 1999/5/EG befindet.</p> <p>Hiermit erklärt Nemko die Übereinstimmung des Gerätes Wideband Data Transmission System Radio mit den grundlegenden Anforderungen und den anderen relevanten Festlegungen der Richtlinie 1999/5/EG.</p>
<b>Greek</b>	<p>ΜΕ ΤΗΝ ΠΑΡΟΥΣΑ ΝΕΜΚΟ ΔΗΛΩΝΕΙ ΟΤΙ Wideband Data Transmission System Radio ΣΥΜΜΟΡΦΩΝΕΤΑΙ ΠΡΟΣ ΤΙΣ ΟΥΣΙΩΔΕΙΣ ΑΠΑΙΤΗΣΕΙΣ ΚΑΙ ΤΙΣ ΛΟΙΠΕΣ ΣΧΕΤΙΚΕΣ ΔΙΑΤΑΞΕΙΣ ΤΗΣ ΟΔΗΓΙΑΣ 1999/5/ΕΚ.</p>
<b>Finnish</b>	<p>Nemko vakuuttaa täten että Wideband Data Transmission System Radio tyyppinen laite on direktiivin 1999/5/EY oleellisten vaatimusten ja sitä koskevien direktiivin muiden ehtojen mukainen.</p>
<b>French</b>	<p>Par la présente Nemko déclare que l'appareil Wideband Data Transmission System Radio est conforme aux exigences essentielles et aux autres dispositions pertinentes de la directive 1999/5/CE.</p> <p>Par la présente, Nemko déclare que ce Wideband Data Transmission System Radio est conforme aux exigences essentielles et aux autres dispositions de la directive 1999/5/CE qui lui sont applicables.</p>
<b>Italian</b>	<p>Con la presente Nemko dichiara che questo Wideband Data Transmission System Radio è conforme ai requisiti essenziali ed alle altre disposizioni pertinenti stabilite dalla direttiva 1999/5/CE.</p>

<b>Portuguese</b>	Nemko declara que este Wideband Data Transmission System Radio está conforme com os requisitos essenciais e outras disposições da Directiva 1999/5/CE.
<b>Spanish</b>	Por medio de la presente Nemko declara que el Wideband Data Transmisión System Radio cumple con los requisitos esenciales y cualesquiera otras disposiciones aplicables o exigibles de la Directiva 1999/5/CE.
<b>Swedish</b>	Härmed intygar Nemko att denna Wideband Data Transmission System Radio står i överensstämmelse med de väsentliga egenskapskrav och övriga relevanta bestämmelser som framgår av direktiv 1999/5/EG.

## Restrictions (English)

**Austria:** Use of plug-in radio devices only with host equipment and external antennas as declared by the manufacturer.

**France:** Transmit power subject to the following limits:

Indoor: 20dBm EIRP within the 2400–2483.5MHz (CH 1–13).

Outdoor: 10dBm EIRP within the 2400–2483.5MHz band (CH 1–13).

**Belgium:** EIRP limited to 10 mW.

**Hungary:** Processing gain: min 10 dB, Antenna type: integral or external with max gain 6 dBi.

**Italy:** None. If used outside of own premises, general authorization is required.

**Luxembourg:** None. System provider for third-party traffic may require a telecommunications Act license.

**The Netherlands:** 10 mW license-free indoor and outdoor. 100 mW license-free indoor only. 100 mW with license outdoor within 2451- 2471 MHz. Protection of existing use Government and ENG/OB.

**United Kingdom:** System provider for third-party traffic may require a Wireless Telegraphy and/or Telecommunications Act License.

## Restricciones en español

**Austria:** Uso de dispositivos de radio enchufables solamente con el equipo de anfitrión y antenas externas según lo declarado por el fabricante.

**Francia:** Limitado a 2446,5-2483,5 con algunos contstraints y e.i.r.p geográficos limitados a -20dBW/ MHz. Indoor: eirp de 10 mW en 2400-2446 megaciclo. Área privada interior: 2446-2483,5 megaciclos con 100 mW con la autorización. Área privada exterior: la venda no se abre.

**Bélgica:** EIRP limitado a 10 mW.

**Hungría:** Proceso de aumento: DB del minuto 10, tipo de la antena: integral o externo con dBi máximo del aumento 6.

**Italia:** No se requiere ninguno si está utilizada fuera de propias premisas, autorización general.

**Luxemburgo:** Ningunos abastecedor del sistema para el tráfico de los terceros pueden requerir una licencia del acto de telecomunicaciones los.

**Países Bajos:** 10 de interior libres de la licencia del mW y al aire libre. 100 de interior libres de la licencia del mW solamente. 100 mW con la licencia al aire libre dentro de 2451- 2471 megaciclos. Protección del gobierno existente del uso y de ENG/OB.

**Reino Unido:** El abastecedor del sistema para el tráfico de los terceros puede requerir una telegrafía y/o una licencia sin hilos del acto de Telecommunications.

## Restrictions en français

**L'Autriche:** Utilisation des dispositifs par radio embrochables seulement avec l'équipement central et les antennes externes comme avoué par le fabricant.

**France:** Limité à 2446,5-2483,5 avec des certains contstraints et e.i.r.p géographiques limités à -20dBW/ MHz. Indoor: eirp de 10 mW dans 2400-2446 mégahertz. Secteur privé intérieur: 2446-2483,5 mégahertz avec 100 mW avec l'autorisation. Secteur privé extérieur: la bande n'est pas ouverte.

**La Belgique:** EIRP limité à 10 mW.

**La Hongrie:** Traitement du gain: DB de la minute 10, type d'antenne: intégral ou externe avec le maximum du gain 6 dBi.

**L'Italie:** Aucun si utilisé en dehors de de propres lieux, autorisation générale n'est exigé.

**Le Luxembourg:** Aucun fournisseur de système pour le trafic de tiers peut ne pas exiger un permis de Loi de télécommunications.

**Lies Hollandes:** d'intérieur libres de permis de 10 mW et extérieurs. d'intérieur libres de permis de 100mW seulement. 100 mW avec le permis extérieur à moins de 2451- 2471 mégahertz. Protection de gouvernement existant d'utilisation et d'ENG/OB.

**Royaume Uni:** Le fournisseur de système pour le trafic de tiers peut exiger une télégaphie et/ou un permis sans fil de Loi de Telecommunications.

## Static Electricity, ESD, and your palmOne Wi-Fi Card

Electrostatic discharge (ESD) can cause damage to electronic devices if discharged into the device, so you should take steps to avoid such an occurrence.

### Description of ESD

Static electricity is an electrical charge caused by the buildup of excess electrons on the surface of a material. To most people, static electricity and ESD are nothing more than annoyances. For example, after walking over a carpet while scuffing your feet, building up electrons on your body, you may get a shock—the discharge event—when you touch a metal doorknob. This little shock discharges the built-up static electricity.

### ESD-susceptible equipment

Even a small amount of ESD can harm circuitry, so when working with electronic devices, take measures to help protect your electronic devices, including your palmOne™ handheld, from ESD harm. While palmOne has built protections against ESD into its products, ESD unfortunately exists and, unless neutralized, could build up to levels that could harm your equipment. Any electronic device that contains an external entry point for plugging in anything from cables to docking stations is susceptible to entry of ESD. Devices that you carry with you, such as your handheld, build up ESD in a unique way because the static electricity that may have built up on your body is automatically passed to the device. Then, when the device is connected to another device such as a docking station, a discharge event can occur.

### Precautions against ESD

Make sure to discharge any built-up static electricity from yourself and your electronic devices before touching an electronic device or connecting one device to another. The recommendation from palmOne is that you take this precaution before connecting your handheld to your computer, placing the handheld in a cradle, or connecting it to any other device. You can do this in many ways, including the following:

- Ground yourself when you're holding your mobile device by simultaneously touching a metal surface that is at earth ground.
- For example, if your computer has a metal case and is plugged into a standard three-prong grounded outlet, touching the case should discharge the ESD on your body.
- Increase the relative humidity of your environment.
- Install ESD-specific prevention items, such as grounding mats.

### Conditions that enhance ESD occurrences

Conditions that can contribute to the buildup of static electricity in the environment include the following:

- Low relative humidity.
- Material type (The type of material gathering the charge. For example, synthetics are more prone to static buildup than natural fibers like cotton.)
- The rapidity with which you touch, connect or disconnect electronic devices.

While you should always take appropriate precautions to discharge static electricity, if you are in an environment where you notice ESD events you may want to take extra precautions to protect your electronic equipment against ESD.

POSTEL  
02538/POSTEL/2005



For information on environmental programs, visit [www.palmOne.com/environment](http://www.palmOne.com/environment).

**NUMERICS**

104-bit ASCII 7  
 104-bit hex 7  
 104-bit passphrase 7  
 40-bit ASCII 7  
 40-bit hex 7  
 40-bit passphrase 7  
 802.11b radio 1

**A**

access point 1  
 ad hoc. *See* peer-to-peer network  
 adding  
   nonencrypted network 5  
   peer-to-peer (ad hoc) network 46  
   VPN account 20  
   VPN account on Tungsten T3 or Zire 72  
     31  
   WEP-encrypted network 6  
 Adobe Acrobat Reader v  
 Apple Base Station network password 6  
 auto connect VPN account 27

**B**

backup card or software 57  
 battery 2, 43  
 Bluetooth 2  
 broadband network 11

**C**

CE Compliance Statement 62  
 channels supported by Wi-Fi card 48, 56, 59  
 checking VPN connection 25, 34  
 Command stroke toolbar 41  
 common questions 56–58

confirmation tone 2  
 conformity declaration 62  
 connecting to a network 10  
 connection information 42  
 connection problems 56  
 Conserve Power option 43  
 creating VPN account on Tungsten T3 or  
   Zire 72 31  
 creating VPN account on Tungsten T5 or  
   Tungsten E2 20  
 customer support 56, 58

**D**

disabling  
   VPN 38  
   Wi-Fi 39  
 disconnecting VPN 26  
 DNS 23, 33  
 documentation, moving through v  
 domain server name 23, 33

**E**

editing  
   network connection settings 50  
   VPN account on Tungsten T5 or Tung-  
     sten E2 29  
 electrostatic discharge 67  
 email problems 38  
 enabling Wi-Fi 39  
 ESD 67  
 expansion card accessories 4

**F**

FAQs 56  
 FCC Statement 61

firewall 19  
 frequencies, table of Wi-Fi 59

**H**

handheld  
   memory 58  
   reset 57  
   version 58  
 hard reset 57  
 help 56, 58  
 HotSync Manager 11  
   *See also* synchronizing wirelessly

**I**

ICES Statement 62  
 icon  
   VPN lock 41  
   Wi-Fi 41  
 inserting Wi-Fi card 2  
 IP address setting 14, 23, 33, 46  
 IPsec 19  
 ISM band 56, 59

**K**

key terms vi

**L**

local area network 1

**M**

media access control (MAC) address 42

**N**

network name (SSID) 1, 46, 50  
 network security 6, 19

network settings, changing 50  
network setup  
    nonencrypted network 5  
    peer-to-peer network 46  
    WEP-encrypted network 6  
nonencrypted network, setting up 5

## **P**

paging through documentation v  
Palm Desktop software 11  
passphrase setting for WEP encryption 6  
peer-to-peer network  
    changing settings for 50  
    communication channels 46  
    defined 46  
    joining 46  
    prerequisites for setting up 46  
    setting up 46  
PPTP protocol 19  
Previous View icon in Acrobat Reader v

## **Q**

questions and answers 56–58

## **R**

removing Wi-Fi card 4  
reset 57

## **S**

security  
    VPN 19  
    WEP encryption 6  
setting up  
    nonencrypted network 5  
    peer-to-peer network 46

    VPN account 20, 31  
    WEP-encrypted network 6  
shortcuts vi  
sidebars vi  
signal strength indicator 40  
specifications 63  
SSID 1, 46  
static electricity 67  
storing Wi-Fi card 4  
synchronizing for the first time 11  
synchronizing wirelessly  
    preparing computer for 12  
    preparing handheld for 14  
    prerequisites 11  
    problems 57  
System Sound setting, turning on or off 2

## **T**

TCP/IP 22, 33  
technical assistance 56, 58  
tips vi  
troubleshooting 56–58  
Tungsten T3 VPN accounts 31  
Tungsten T5 or Tungsten E2 VPN accounts  
    20  
turning off  
    VPN 38  
    Wi-Fi 39  
turning on  
    VPN 38  
    Wi-Fi 39


## **V**

viewing  
    connection information 42

    Wi-Fi signal strength 34, 40  
VPN account  
    auto connect 27  
    connecting using Tungsten T5 or Tungsten E2 24  
    defined 19  
    disabling 38  
    enabling on Tungsten T3 or Zire 72 31, 38  
    prerequisites for setting up 20, 31  
    problems connecting to 57  
    setting up on Tungsten T3 or Zire 72 31  
    setting up on Tungsten T5 or Tungsten E2 20  
    switching between VPN accounts on Tungsten T3 or Zire 72 35  
    switching between VPN accounts on Tungsten T5 or Tungsten E2 28  
    verifying connection to 25  
VPN connection, checking 25, 34  
VPN lock icon 10, 25, 34, 41  
VPN password 20, 31  
VPN username 20, 31

## **W**

WEP key  
    passphrase 7  
    type 7  
WEP-encrypted network  
    changing settings for 50  
    prerequisites for setting up 6  
    setting up 6  
Wi-Fi  
    connection information 42  
    icon on toolbar 41



- signal strength indicator 40
- turning off 39
- Wi-Fi card
  - carrying case accessory 4
  - channels supported by 48, 56, 59
  - inserting 2
  - removing 4
- Wi-Fi network
  - changing settings 50
  - defined 1
  - setting up 1–10
- wireless access point 1
- wireless connection problems 56
- wireless local area network 1
- wireless synchronization
  - preparing computer for 12
  - preparing handheld for 14
  - prerequisites 11
  - problems 57

## **Z**

- Zire 72 VPN accounts 31
- Zoom In icon v