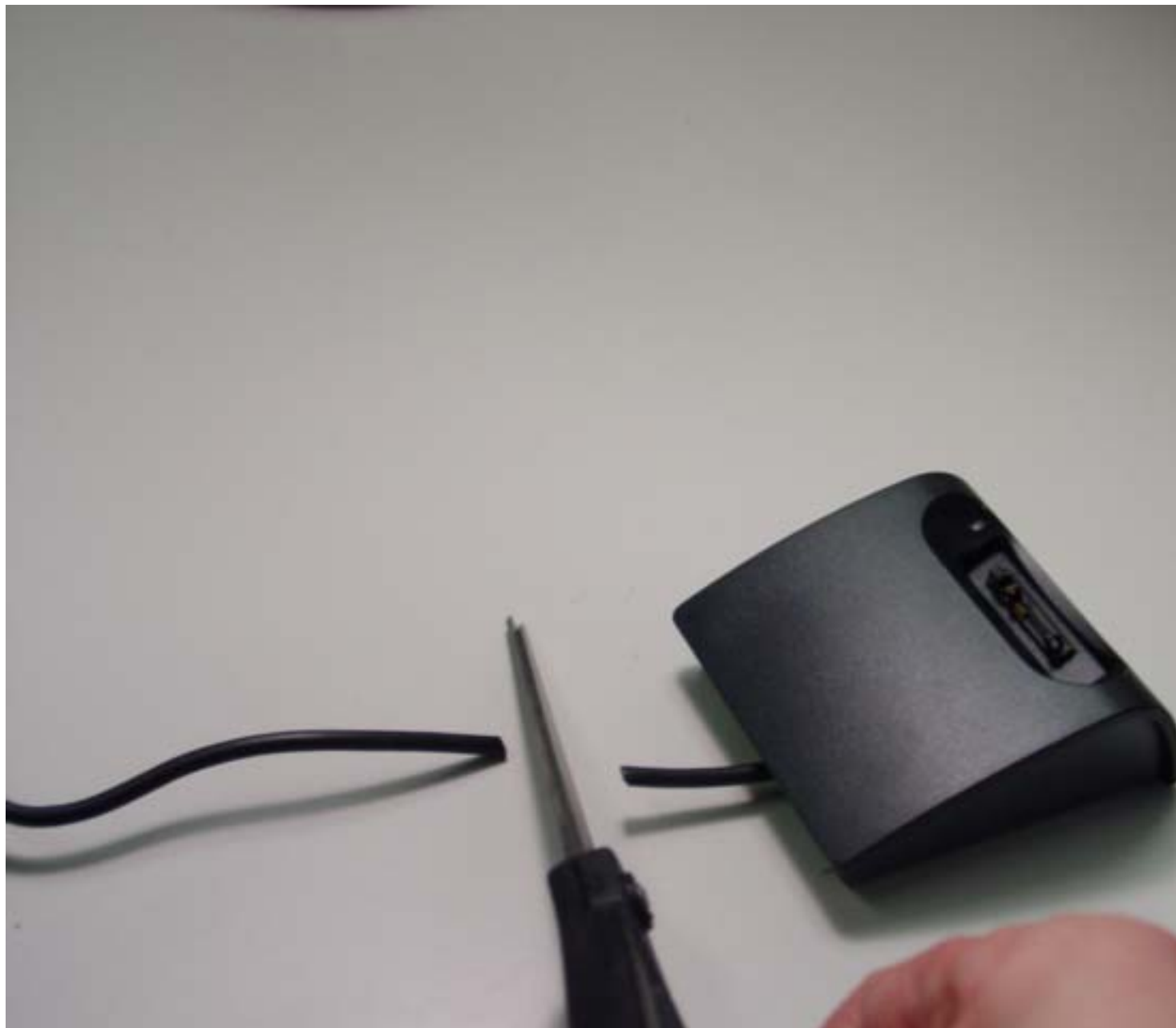




Centro product and tools needed for disassembly – Scissors and Small Phillips Head Screw Driver

---



Cut cable near Centro Dock with scissors

---



Cut USB plug off with scissors

---



Turn Centro Dock over



Remove sticky pads with fingers

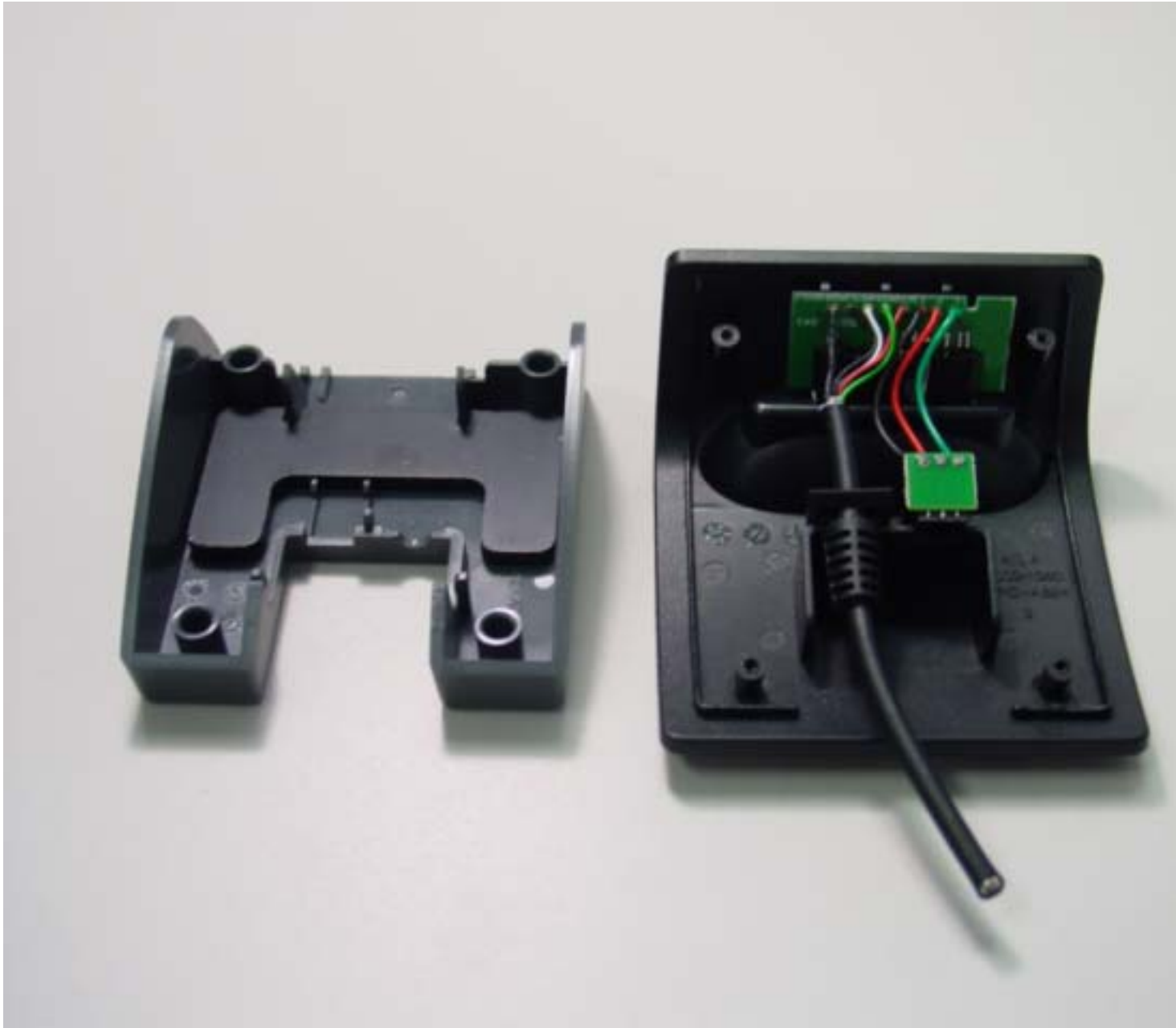
---



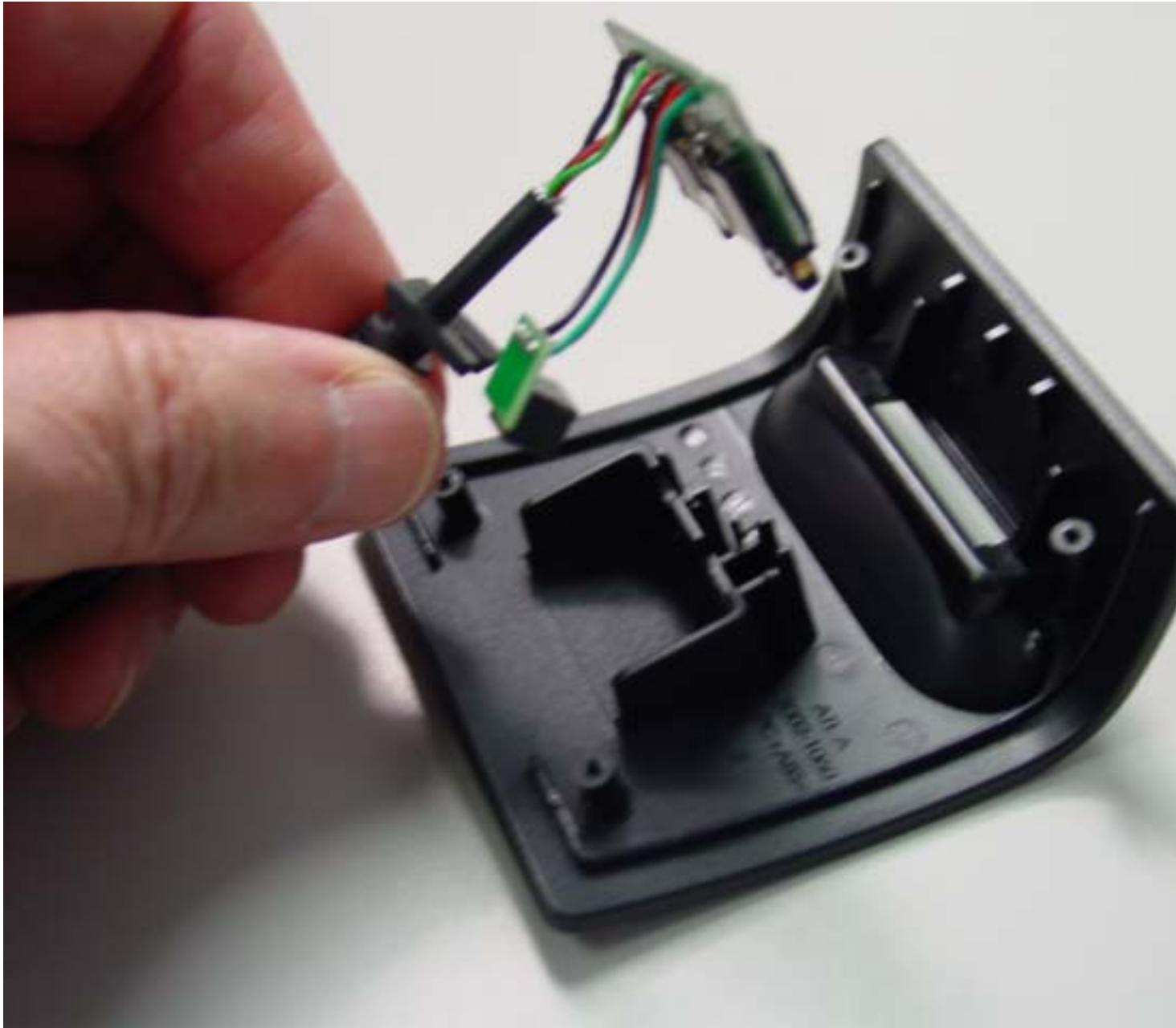
Remove screws with screwdriver



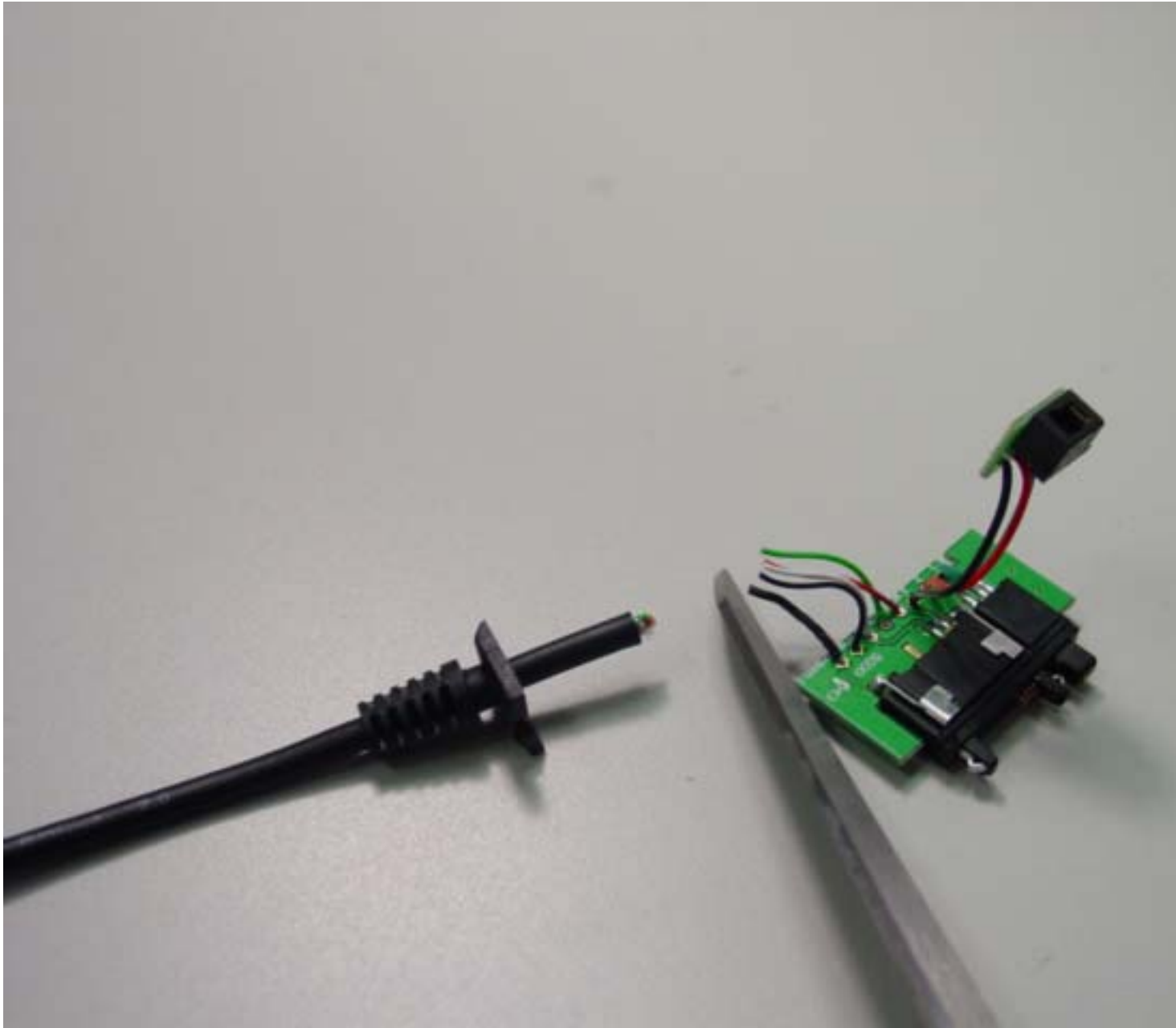
Lift off base of Centro Dock with hand



Separate Dock into two pieces

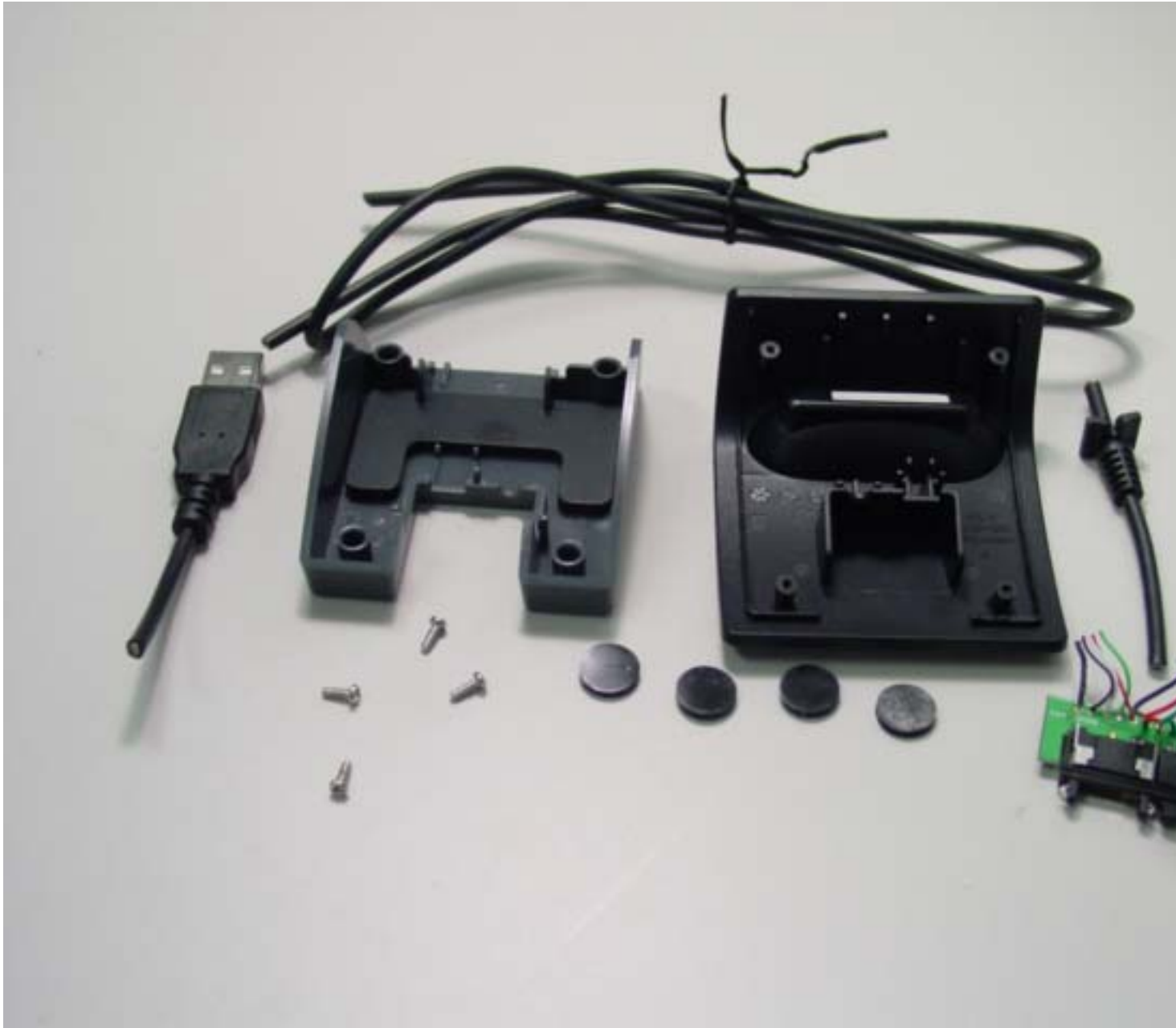


Lift out PCB and Connector by hand



Cut off PCB and Connector

---



Fully disassembled Centro Cradle



Tools needed for disassembly – Scissors and Phillips Head Screw Driver

---