



**Palm™ MP3® Audio Kit
Handbook**

Copyright

© 2003 Palm, Inc. All rights reserved. HotSync, the Palm logo, and Palm OS are registered trademarks of Palm, Inc. Palm is a trademark of Palm, Inc. Palm uses the MPEG Layer-3 audio and decoding technology trademarks under express license from Fraunhofer II and Thompson. All other brands are trademarks or registered trademarks of their respective owners.

Disclaimer and Limitation of Liability

Palm, Inc. assumes no responsibility for any damage or loss resulting from the use of this guide.

Palm, Inc. assumes no responsibility for any loss or claims by third parties which may arise through the use of this product. Palm, Inc. assumes no responsibility for any damage or loss caused by deletion of data as a result of malfunction, dead battery, or repairs. Be sure to make backup copies of all important data on other media to protect against data loss.

IMPORTANT Please read the End User Software License Agreement with this product before using the accompanying software program(s). Using any part of the software indicates that you accept the terms of the End User Software License Agreement.



Contents

About the Palm™ MP3® Audio Kit	1
Handheld requirements	1
System requirements	1
Audio Kit contents	2
Installing RealOne Player	2
Inserting the expansion card	3
Connecting the stereo headphones	4
Listening to MP3 files on your handheld	4
Using RealOne Player Help on your handheld	5
Using RealOne Player on your desktop with your handheld	6
Copying tracks from a music CD to your card	7
Listening to audio files on your handheld	8
Downloading your free audio book and installing Audible software	8
Copying files from your computer to your card	9
Deleting files on your card	11
Product Regulatory Information	13

About the Palm™ MP3® Audio Kit

The Palm™ MP3® Audio Kit makes it easy for you to listen to music, including MP3 files, and audio books on your handheld anytime, anywhere. The expansion card gives you memory space to store music, audio books, photographs, and software applications. You can gain even more space by purchasing additional expansion cards.

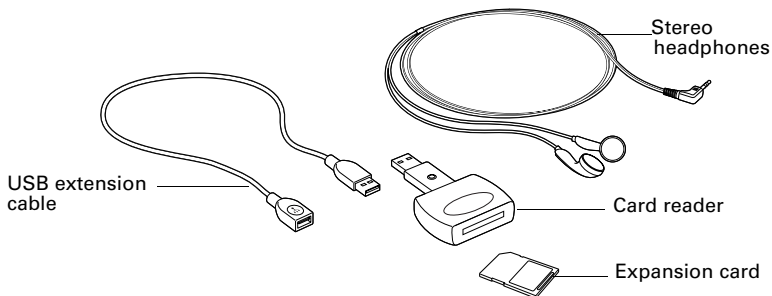
Handheld requirements

- Palm™ handheld with Palm OS® 5.0, an expansion card slot, and 3.5mm audio jack
- 500 kilobytes of available RAM

System requirements

- PC using Windows 98/ME/2000/XP, or Mac computer using OS 9.1 or OS X v10.1.2 or later
- An available USB port on your computer
- An Internet connection

Audio Kit contents



- Plus, CD-ROM containing RealOne Player, a link to Audible for installing the free audio book and AudibleManager, and USB drivers for Windows 98.

Installing RealOne Player

RealOne Player lets you to listen to MP3 and other music files from the web or a CD on your handheld or computer desktop.

To install RealOne Player:

1. **Windows:** Insert the CD-ROM into your computer and follow the onscreen instructions.
1. **Mac:** Double-click the RealOne Player icon and follow the onscreen instructions.
2. Perform a HotSync® operation to install RealOne Player on your handheld.

Promotional music offers are available at the RealNetworks web site. Open RealOne Player on your desktop while you are connected to the Internet and you are automatically taken to this web site.

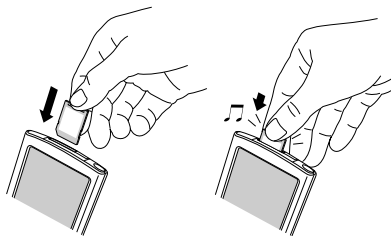
Inserting the expansion card

1. Remove the placeholder card from your handheld by pushing lightly against it with your thumb. When it releases, you hear the system sound.

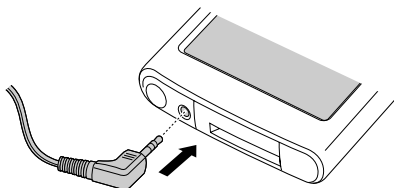
IMPORTANT You can damage the expansion slot if you pull the card out of the slot before you hear the tone and it releases from the slot.

2. Push the expansion card in with your thumb. You feel the card lock and hear the system sound.

NOTE You hear the tone only if your system sound is turned on.



Connecting the stereo headphones



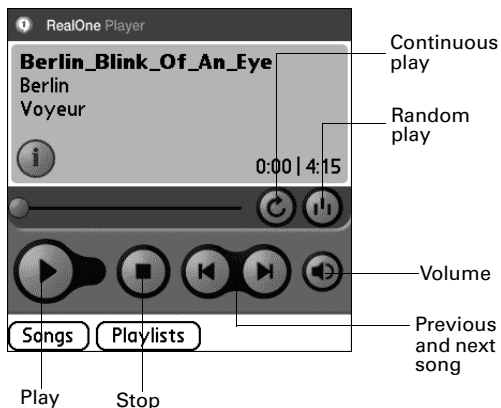
NOTE The headphone jack is located on the top or side of your handheld.

Listening to MP3 files on your handheld


Your card contains three MP3 files so you can start listening to music on your handheld immediately after installing RealOne Player. For more information on the artists included on your card, visit www.imusic.com.

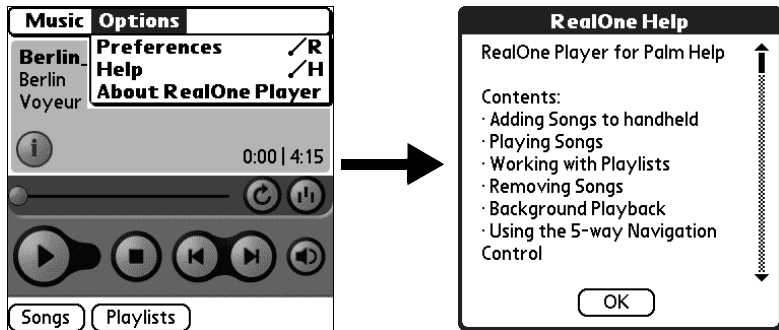
1. Insert the expansion card and headphones into your handheld.
2. From the Applications Launcher on your handheld, open RealOne Player.
3. Use the onscreen buttons to listen to a file.

TIP You can also press Up or Down on the 5-way navigator to adjust the volume.



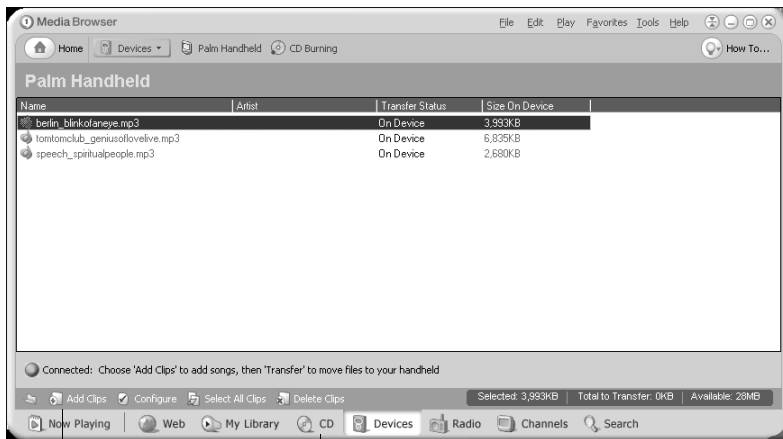
Using RealOne Player Help on your handheld

1. From the Applications Launcher on your handheld, open RealOne Player.
2. Select the Menu icon .
3. Select Options.
4. Select Help to learn more about using RealOne Player.



Using RealOne Player on your desktop with your handheld

1. Insert the card into your handheld, and connect your handheld to the HotSync® cradle/cable.
2. From the Applications Launcher, open RealOne Player on your handheld.
3. Double-click RealOne Player on your computer desktop.
4. Click Devices at the bottom of the command bar on your computer desktop, and double-click the card to open it.



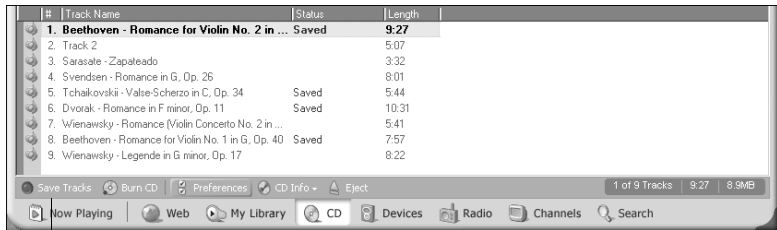
Add songs, then transfer them to your handheld

Play or copy a CD

TIP For more help, click Help in the upper-right corner of the screen.

Copying tracks from a music CD to your card

1. Insert the card into your handheld, and connect your handheld to the HotSync® cradle/cable.
2. From the Applications Launcher, open RealOne Player on your handheld.
3. Double-click RealOne Player on your computer desktop.
4. Insert a music CD into your computer.
5. Click CD at the bottom of the RealOne Player command bar on your computer desktop.
6. Click Save Tracks.



Save Tracks

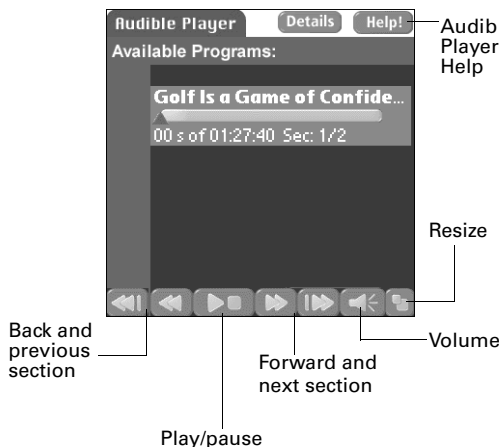
7. Follow the onscreen instructions to choose and save the tracks you want to copy to your card.
8. Click Devices at the bottom of the command bar, and open Palm Handheld.
9. Select Add Clips at the bottom of the command bar and follow the onscreen instructions to select the tracks to add to your card.
10. Click Transfer at the bottom of the command bar.

Listening to audio files on your handheld

Your card contains AudiblePlayer, plus the first chapters of eight books from Audible.

1. Insert the expansion card and connect the headphones to your handheld.
2. From the Applications Launcher, open AudiblePlayer on your handheld.
3. Use the onscreen buttons to listen to a file.

TIP You can also press Up or Down on the navigator to adjust the volume.



Downloading your free audio book and installing Audible software

When you visit the Audible link included on the CD-ROM, you'll get information on the free audio book offer, and instructions on installing AudibleManager. This software makes it easy to download, organize, and listen to audio from audible.com on your handheld using AudiblePlayer. Windows users can also install a computer desktop version of AudibleManager.

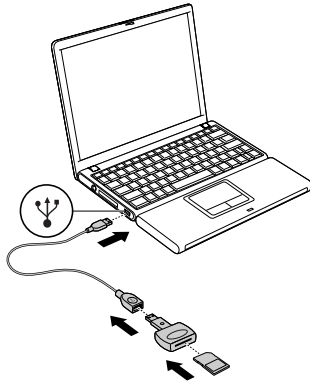
To download your free audio book and install AudiblePlayer on your handheld:

1. Connect to the Internet on your desktop computer.
2. Insert the CD-ROM into your computer, and click AudiblePlayer.
3. Follow the onscreen instructions to go online to download your free audio book, and install AudibleManager.

NOTE When prompted for Mobile Device during this installation, choose Palm OS 5 PDA from the drop-down menu.

Copying files from your computer to your card

1. Connect the card reader to your computer, using the USB cable.

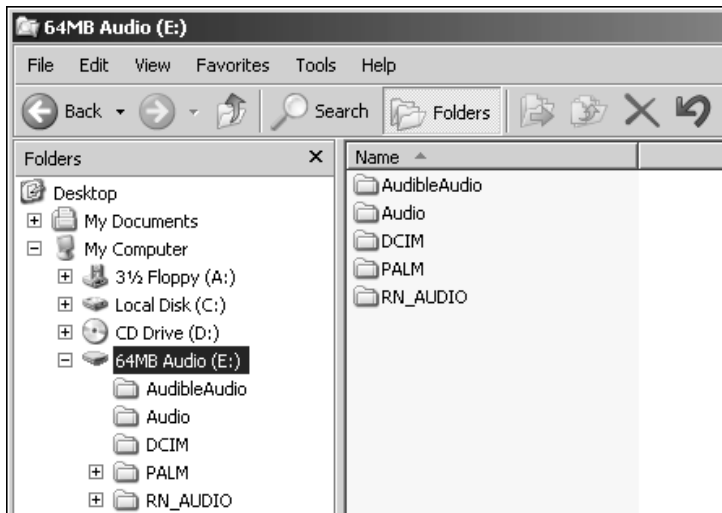


2. Insert the expansion card into the card reader.

3. Use your computer directory to open the expansion card.

NOTE Your computer recognizes the card reader as an external disk drive. If your operating system requires the installation of a driver for the card reader, install the driver from the CD-ROM that came with your Audio Kit.

4. Open the directory folder for your card to see the storage folders.



5. Copy the files on your computer to the correct card folder.

NOTE Use AudibleManager to copy Audible files, and RealOne Player to copy files in RealOne format to your card.

AudibleAudio	Audible files
Audio	Audio files (MP3, WAV)
DCIM	Images (JPG, JPEG, GIF) Videos (QT, MOV, AVI, MPG, MPEG)
Palm/Launcher	Applications (PRC) Databases (PDB) Web clipping applications (PQA)
Palm/Books	Electronic books (PDB, PRC)
RN_Audio	Files in RealOne format

Deleting files on your card

To delete audio files, eBooks, images, or videos on your card:

1. Open the application on your handheld that uses the file you are deleting.
2. Use the application's command to delete files from the card.

TIP You can delete the preloaded files on your card to gain more memory space.

NOTE Some applications cannot be opened on a card because they use libraries stored on the handheld. If an error message appears when you open a card application, copy the application to the handheld and open it.

Product Regulatory Information

FCC Statement

This device complies with part 15 of the FCC rules. Operation is subject to the following two conditions: (1) This device may not cause harmful interference, and (2) this device must accept any interference received, including interference that may cause undesired operation.

NOTE This equipment has been tested and found to comply with the limits for a Class B digital device, pursuant to Part 15 of the FCC rules. These limits are designed to provide reasonable protection against harmful interference in a residential installation. This equipment generates, uses, and can radiate radio frequency energy and, if not installed and used in accordance with the instructions, may cause harmful interference to radio communications. However, there is no guarantee that interference will not occur in a particular installation. If this equipment does cause harmful interference to radio or television reception, which can be determined by turning the equipment off and on, the user is encouraged to try to correct the interference by one or more of the following measures:

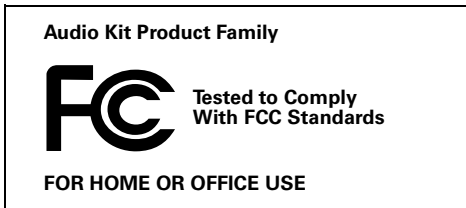
- Reorient or relocate the receiving antenna.
- Increase the separation between the equipment and receiver.
- Connect the equipment into an outlet on a circuit different from that to which the receiver is connected.
- Consult the dealer or an experienced radio/TV technician for help.

The use of shielded I/O cables is required when connecting this equipment to any and all optional peripheral or host devices. Failure to do so may violate FCC rules.

CAUTION Changes or modifications not covered in this manual must be approved in writing by the manufacturer's Regulatory Engineering Department. Changes or modifications made without written approval may void the user's authority to operate this equipment.

Responsible Party:

DataFab Systems, Inc.
No. 11, Alley 26, Lane 178, Ping-Tung Rd., Sec 1, Ping-Chen City, Taoyuan, Taiwan, R.O.C.
Phone +866 3 460 4000



Canadian ICES-003 Statement

This Class B digital apparatus meets all requirements of the Canadian Interference-Causing Equipment Regulations.

Cet appareil numérique de la classe B respecte toutes les exigences du Règlement sur le matériel brouilleur du Canada.



CE Compliance Statement

This product was tested by Palm, Inc. and found to comply with all the requirements of the EMC Directive 89/336/EEC as amended.

Palm, Inc.
400 N. McCarthy Blvd.
Milpitas, California 95035
United States of America

www.palm.com

PN: 406-5517A-US