

# Quick Start for Palm™ In-car GPS Solution bundle

This guide is designed to get your new GPS bundle up and running quickly. For additional information, see the manual on the Mapopolis CD-ROM included with your bundle.

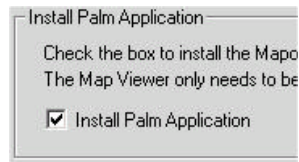
## Safety Warning:



Do not attempt to view the viewer handheld while driving. Pull over to the side of the road to view or modify maps.

# 1

## Installing Mapopolis & Maps on Your Handheld



Place the Mapopolis CD-ROM into your CD-ROM drive. The Map Loader software will automatically start. The first time that the CD is run, the “Install Palm Application” check box will already be checked. If you ever need to re-install the Mapopolis Map Viewer software on your handheld, simply re-check this box.

Install App Checkbox

Next, choose one or more maps, by choosing a state or province and then searching for a place name or choosing a county. Click on a county name to place the map in the “Files to be installed” list. If necessary, you can click on the map name in the “Files to

be installed” list to remove it. When you are done, click on the “Install Files” button to begin the synchronization of the maps and viewer to your handheld.

## 2

## Connecting Your GPS Device

**QUICK TIP:** Take the time to decide where you will be placing the GPS receiver, where your handheld will go, and how you intend to route the cables. Planning this out will prevent possible frustrations while using the GPS solution.



We recommend the GPS-antenna unit be placed on the roof (it has a magnetic base) or on the dashboard for best satellite-reception. Depending on the model of car that you have, you may find that you are left with excess cable when the unit is set up. We recommend tucking this into a corner of the dashboard or using one of the included twist-ties to secure it.

We recommend using a window or dash mount to secure your Palm™ handheld & position it for easy viewing.

Your GPS unit consists of two pieces: a small box with a cable (the GPS unit) and a cable with a cigarette lighter adapter. There is a round connector on both the cable with the cigarette lighter adapter and on the end of the gray box’s cable, line up the arrows and connect the two connectors.

Next, plug the cigarette lighter adapter into your vehicle's cigarette lighter and then plug the flat connector into the serial port on the bottom of your PDA.

## 3

### Using GPS in your vehicle

We recommend that you configure your route before beginning to drive and if you need to re-configure your route, you should stop the vehicle before doing so.

Do not attempt to view the viewer handheld while driving. Pull over to the side of the road to view or modify maps.

## 4

### Configuring GPS in Mapopolis

Start Mapopolis by clicking the Mapopolis icon from your Palm handheld's launcher. If you have installed maps, you will see a list of maps, choose one and click view. If you did not install any maps, you will need to install a map, as described in step two, before proceeding. Click on the start button from the splash screen and then click on the menu button (located on the far right of the Mapopolis toolbar at the bottom of the screen to bring up the Mapopolis menu).



Mapopolis



Menu Button

Click on the GPS button on the menu, and then click on the GPS Settings button at the top of the

#### GPS Settings

- Use Serial Connection
- Use MemStick Connection
- Use CF Connection
- Use Infrared Connection
- Use Bluetooth Connection

GPS screen. Click on the downward-pointing arrow near the top of the screen and choose "Use Serial Connection" from the drop-list. Click Save.

# 5

## Getting Started with Mapopolis & Your GPS Device

The Mapopolis software included with your bundle allows you to view maps and generate directions right on your Palm OS® handheld. Once directions have been generated, you can view them as either a text-list or displayed on the map. When they are shown on the map, the current GPS position is displayed, showing you your position along the route.

Mapopolis also contains a number of advanced features, that are not discussed here, such as GeoMarks and Maplets. More information about these can be found in the manual located on the Mapopolis CD-ROM.

### Loading A Map

To load a map, click on the menu button, and then click on the maps button on the menu. Choose the map that you would like to load, tap it (which will highlight it in blue) and click on view. The appropriate maps must be loaded to generate directions. Note that Mapopolis, by default, also loads all county maps contiguous to the county that you have chosen.

### Zooming & Scrolling The Map

Maps can be easily scrolled by dragging your stylus across your PDA's screen. The map will move as the stylus is moved.

The map can be zoomed in by clicking on the magnifying glass with the plus sign next to it (on the far left of the menu bar). The map can be zoomed out by clicking on the magnifying glass with

the minus sign next to it (located adjacent to the zoom-in button). The box button (third from the right on the menu bar) can be used to zoom to a specific area of the map. Click on the box icon, and then drag your stylus across the screen to create a box. Mapopolis will zoom in to show the area you have selected.

## Adding & Removing Detail

Mapopolis automatically adds additional detail (such as small streets and location information to the map as it is zoomed in and out. However, there may be times when you want to reduce the level of detail shown to make the map easier to read or to increase it in order to find a specific location. To add detail, click the plus icon. Detail can be removed by clicking the minus icon. When you have reached an extreme (such as the most, or least amount of detail that can be shown), the corresponding icon will disappear to let you know that you can not add or remove any detail. Note that the amount of detail that can be added/removed varies by zoom level. If you still can't find what you are looking for, try zooming in and clicking the add detail button again.

## Generating Directions

To generate directions, click on the menu button and then the "Directions" button on the menu. You will be prompted first for a start location and then for a destination. Enter the street number into the left-most "number" box and the street name in the "Street" box to the right of the number box. Note that numbered streets should be entered as "E 93", etc. If you are unsure of the exact street name or spelling, enter a few characters, all matching streets will be selected. Once you have selected your start and destination locations, you can choose to view the directions either as text or on the map.

Note that there are many advanced options with generating directions, such as using a location or Palm<sup>™</sup> Address Book contact as your origin or destination. Please see the manual on the Mapopolis CD-ROM for more information.

# 6

## Getting Support for the Palm In-car GPS solution bundle

If you are having problems with the Mapping software:

For more information about using the software, we recommend that you view the Mapopolis Manual, located in the root directory of the Mapopolis CD-ROM. To use the manual, you will need Adobe Acrobat Reader, which can be downloaded at no charge from <http://www.adobe.com/products/acrobat/readstep.html>.

If you are still experiencing problems or can not find the information you need. You can reach Mapopolis support at [support@mapopolis.com](mailto:support@mapopolis.com). Additional contact information is located on our website, [www.mapopolis.com](http://www.mapopolis.com).

If you are having problems with the GPS hardware:

For more information or for technical support please visit Holux Website: [www.holux.com.tw](http://www.holux.com.tw)

For email support please send questions to [info@holux.com.tw](mailto:info@holux.com.tw)

For phone support please call: (408) 262 - 8118

If you are having problems with your Palm handheld: <http://www.palm.com/support> for Palm handheld support